

LOUD FRIDGE THEATRE GROUP
PRESENTS



STRAIGHT

BY SCOTT ELMEGREEN &
DREW FORNAROLA



**BEN LIKES BEER, SPORTS, AND EMILY.
AND CHRIS.**

JULY 25 - AUGUST 4

TENTH AVENUE ARTS CENTER

930 TENTH AVENUE

SAN DIEGO CA 92101

WWW.LOUDFRIDGETHEATRE.COM

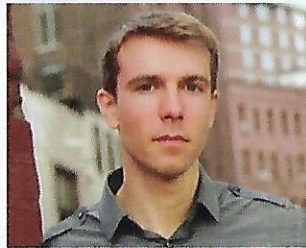
THE PLAYWRIGHTS



Drew Fornarola is a playwright and song writer from New York City. His play *Straight* recently concluded a critically acclaimed run off-Broadway and was designated a 2016 *New York Times* Critics' Pick. Fornarola has written for DreamWorks' *Shrek* and *VeggieTales* Franchises, and his musical *Claudio Quest* won six 2015 New

York Musical Festival Awards for excellence, the most of any show. Other Theatre Credits include Dramatic Publishing's title *COLLEGE the Musical* (Hippodrome State Theatre, mtvU Awards), *Thucydides* (Winner of the Samuel French Play Festival), *Vote for Me: A Musical Debate* (London Theatre Workshop) and an adaptation of actress Molly Shannon's beloved children's book *Tilly the Trickster* (Atlantic Theater Company) Drew has headlined concerts around the world including the Lincoln Center, Feinstein's/54 Below, Broadway au Carre (Paris), Bar Fedora at Au Lac (Los Angeles), and The Duplex (New York).

Scott Elmegreen is a playwright, composer, and author. His other shows include *Vote For Me: A Musical Debate* (Roy Arias Stages, Off-Broadway; London Theatre Workshop, UK), *College The Musical* (NYMF Award – Best Lyrics; Hippodrome State



Theatre), *Thucydides* (Samuel French Play Festival Winner), and *Awesome Allie, First Kid Astronaut* (pub. Theatrical Rights Worldwide), which premiered Off-Broadway and is now performing in planetariums and museums across the United States. His music and orchestrations have premiered on Broadway and HBO in the Drama Desk- and Emmy Award-Nominated *Colin Quinn Long Story Short*, (directed by Jerry Seinfeld), as well as in numerous national tours, Off-Broadway and Off-Off-Broadway shows, and the *Phd Comics Movie*. Scott wrote the book, music, and lyrics for theatrical adaptations of *The Magic School Bus* national tours and the NY Times Bestselling *Ladybug Girl and Bumblebee* Boy picture books (Bay Area Children's Theatre premiere; national tour).

LFTG

JULY 25- AUGUST 4

Loud Fridge Theatre Group

Presents

STRAIGHT

BY

**DREW FORNAROLA AND SCOTT
ELMEGREEN**

DIRECTING CO-OPT

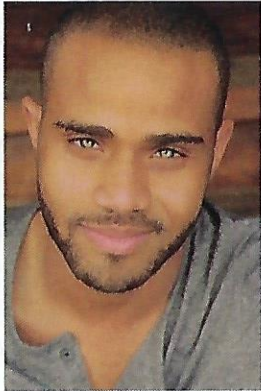
ANDRÉA AGOSTO

KATE ROSE REYNOLDS

LEIGH AKIN

JOHN WELLS III, PRODUCTION MANAGER

FORWARD FROM THE ARTISTIC DIRECTOR



Loud Fridge Theatre Group, was founded by a collection of actors and designers with the common goal of telling honest stories well. We are a brand-new theatre group, excited to produce our very first production. We are dedicated to telling stories that reflect the human condition, stories that challenge us to question social norms, and stories that give us insight to every walk of life. We aim to be a constant noise in the community, telling stories that are bold, honest, and diverse- and telling them LOUDLY! It is a

Theatre dedicated to people and therefore dedicated to you! Basically, we intend to make some noise!

STRAIGHT is a provocative play that deals with fidelity, sexuality and identity in “post-equality” America. While I am sure there can be many interpretations of this, at the root I believe *STRAIGHT* is a story about love. Unrequited love, unconditional love, unexpected love! And how can you love, when you haven't learned how to love yourself? Life is messy! We as humans like to put things in their own perspective categories, but life isn't always black and white. In fact, most of life consists of navigating through the shades of gray. In this show, you will observe three individuals exist in their own perspective shades of gray, as they struggle to navigate the blurred lines between social acceptance and personal Preference.

Enjoy the show!!!

John Wells III

Artistic Director

Loud Fridge Theatre Group

www.loudfridgetheatre.com

CAST *in order of appearance*

BEN John Wells III
CHRIS Bryce Gerson
EMILY Arielle Siler

SETTING The living room of Ben's apartment

TIME Present Day,
Between the
months of
September and
January

PRODUCTION TEAM

DIRECTING CO-OPT Kate Reynolds
Andréa Agost
Leigh Akins

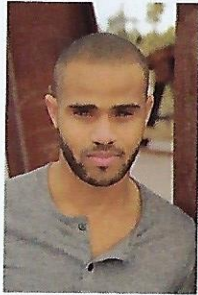
PRODUCTION MANAGER John Wells III
ASSOCIATE PRODUCTION
MANAGER Eddie Martinez

STAGE MANAGER Kellen Gold
SET DESIGN TEAM Sean Paul Boyd
John Wells III
Eddie Martinez

COSTUMES Joy Yvonne Jones
SOUND DESIGN Kellen Gold
LIGHTING DESIGN Kate Reynolds
PROPERTIES John Wells

PHOTOGRAPHY Andréa Agosto
Eddie Martinez

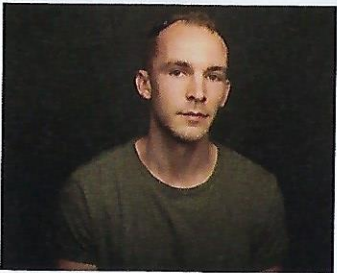
THE CAST



John Wells III (Ben), is thrilled to participate in the San Diego Premiere of *STRAIGHT!* Stage Credits: *Cardboard Piano*, *The Mystery of Love and Sex* (Diversionsary Theatre), *Dogfight*, *A Chorus Line* (Chance Theatre), *Sister Act* (Musical Theatre West, Performance Riverside), *Monsters in the American Cinema*, *Communicating Doors* (Scripps Ranch Theatre). Staged readings & Workshops: *Les Switch* (Diversionsary Theatre), *Swimming While Drowning* (Amigos Del Rep), *Top Gun/Underdog* (Carlsbad Players) *Froggy*, *FOB: Folsom*, *SLAM* (La Jolla Playhouse)



Arielle Siler (Emily) is proud to be in the cast of "Straight." She is an actor, applied theatre facilitator, and producer devoted to supporting, performing in, and facilitating spaces of empowerment through theatre. Performance credits: *What to Send Up When Goes Down* (Boston Court Theatre), *The Blacks: A Clown Show* (The Actors Company Theatre), and *Founding Families* (The Pico House). Producing credits include: *The Blacks: A Clown Show*, *Alive & Well: A Night of Black Voices*. Arielle received her Master's in Applied Theatre from Goldsmiths University of London and her BFA in Acting from California Institute of the Arts.



Bryce Gerson (Chris) is thrilled to make his Loud Fridge Theatre Group debut in the role of Chris. A native of San Clemente, CA and a graduate of the University of Oregon, Bryce currently resides in LA. Regional credits include *Charley's Aunt* (Charley Wykeham) & *Bat Boy* (Bat Boy). Film credits include *Ruth*, *Somewhere East*, *If I Had a Dream*, *I Choose Her*, & *Audition*. TV: "Do it Better." Bryce has studied at Speiser/Sturges Acting Studio & Upright Citizens Brigade.

DIRECTING CO-OPT

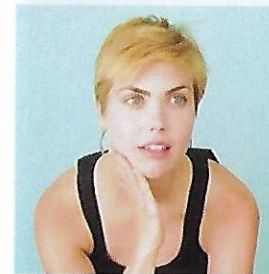


Kate Rose Reynolds (Director/Lighting Designer) is an actor/director/designer, and founding member of The Loud Fridge Theatre Group. Direction Credits: *Jetty* and *Ripped* (the Bristol Valley Theatre). Design credits: *Ever in the Glades/The Complete History of Theater, Abridged*. (Theatre for Young Professionals).

Performance credits: *Move Over Mrs. Markham*, *Communicating Doors* (Scripps Ranch Theatre); *Twelfth Night*, *Hamlet* (Arabian Shakespeare Festival, SF); and *Cardboard Piano* (Diversionsary Theatre). Her feature film, *Soul to Keep*, is now available on all streaming platforms.



Andréa Agosto (Director/Marketing) is an award-winning filmmaker, actress and founding member of Loud Fridge Theatre Group. Theatre credits include: *Bull in a China Shop*, *The Magic in This Soul*, *Elizabeth Hobbs Keckley: From Slavery to Modiste*, *Cardboard Piano*, *Homos*, or *Everyone in America*, *Avenue Q*, *The Best Goodbye*, *Cell*, *You Can't Take it With You*, *Vanya and Sonia and Masha and Spike*, *Bare*, *Flyin' West*, *Mufaro's Beautiful Daughters*, *Working*, *Big River*, *High School Musical*, and *Grease*.



Leigh Ellen Akin is a singer, actor, writer, director and happy new SD resident. She is thrilled to have been able to lend an eye and ear to the direction of "Straight". Before this project she directed the world premier short play "The Hunt" as part of the Out on a Limb festival. Before which she "charmingly portrayed" Mrs. Markham in Scripps Ranch Theatre's *Move Over Mrs. Markham*. She received her master's in Vocal Performance from the Peck School of the Arts, through her work as a classical singer she became aware of the Wesley Balk style of direction and studied movement and direction at the Nautilus Musical Theater institute.

THE PRODUCTION TEAM

Kellen Gold (Stage Manager/Sound Designer) A San Diego transplant from Washington, Kellen is pleased to join 'Straight'. She holds a BA in Theatre Arts from San Diego State University, and is an associate artist at Lambs Players Theatre. Previous SM credits: Doctor Faustus Lights the Lights (SDSU); American Rhythm, Shadowlands, Big Fish, Once, Persuasion, Angel's Arms (LPT); Tuesdays with Morrie (Trinity). Acting credits include: The Diary of Anne Frank (Margot), Smoke on the Mountain (June), Year of the Woman (Laura), and Tartuffe (Laurent). Enjoy the show!

Joy Yvonne Jones (Costumer) is a San Diego transplant from Houston, Texas. She received her BFA in acting from the Guthrie Theatre Training Program at the University of Minnesota. Her most recent acting credits include Hall in *Men on Boats* at New Village Arts Theatre, Saartjie Baartman in *Voyeurs de Venus* at Moxie Theatre and Jane in *Pride and Prejudice* at Cygnet Theatre. She has also been a teaching artist at the Neal Hamil Center in Houston, Texas as well as the Texas Shakespeare Festival for several seasons. Joy is currently working on her revolution at the speed of inspiration.

Eddie Martinez (Associate Producer/Set Design Team) Eddie is thrilled to be included in his first theatrical experience. He has taken an all hands-on deck approach to associate producing and has volunteered his time to deal with any project that needed completing. As a result, Eddie was huge component in the Designing and Building of the set. He says, even though this is his first theatre experience he is "happy to see how everything gets done, from beginning to end."

Sean Boyd (Set Design Team) Sean is the co-founder of Trinity Theatre, and has served as Artistic Director since its inception in 2012. He holds a BA in Theatre Arts from SDSU. Performance Credits: Red, Drinking Habits, The Importance of Being Earnest (Trinity Theatre); Dust, Sons of the Prophet, A Christmas Carol (touring) (Cygnet Theatre); On The Eve (SDSU / LJP Collaboration); Knuffle Bunny, You're a Good Man Charlie Brown, Pinkalicious, Sleeping Beauty (North Coast Rep's PTF). Much love to Megan, Mom, Dad, Joanne, and Connor.

LOCAL ARTIST

Loud Fridge Theatre Group is Dedicated to supporting the Local Artist of San Diego and our surrounding cities. We believe all artist are connected with the same common goal of expression. Today we are honored to show case the works of the following local artists.

- Andrea Agosto
- Alexis Archibald
- Tolu Sarah Martins
- Lindsay Petermann
- Jess Rogawski

All of the pieces displayed in the lobby are available for purchase, please take a moment after the show to take a look at the artwork and to appreciate the creativity of our local Artists.

COMMUNITY PARTNERS

We would like to _____ give a special thanks to our Community Partners, without whom, this show would not have been possible. Special thanks to:

- Diversionary Theatre
- Cygnet Theatre
- Leticia Martinez
- Parker Del Vecchio
- Lambs Players
- OnStage Playhouse
- #1 Fifth Ave. Bar

David Rumley
Photography

FINE PORTRAIT PHOTOGRAPHY

WWW.DAVIDRUMLEYPHOTOGRAPHY.COM

PORTRAITS • HEADSHOTS • FAMILY/EVENTS