

A Note From the Producing Artistic Director

How did we get here so quickly?

Honestly, we're a bit astonished that the theatre has reached 25 Years in Coronado. But here we are. So, we thought it would be an appropriate moment to stop and celebrate.

It has been a rare treat for Kerry, Deborah, Scott and I to work on this project together. We've gathered up some of our favorite performers along with some of our favorite music.

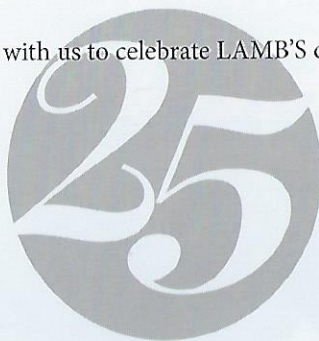
In 1993 we hired a consultant out of New York to help us finalize our remodeling plans for our new resident theatre. We had been meeting in the gutted performance space in the back of the Spreckels Building, and afterwards he walked out through the front doors, looked up and down Orange Avenue on a beautiful sunny Coronado day, and said, "I hope you realize you have one of the finest locations for a theatre in the country."

We agree.

The Spanish named the four small islands off our coast Los Coronados, the Crowned Ones. That is why Coronado today is also known as the Crown City.

We are happy to have you with us to celebrate LAMB'S quarter of a century in the Crown City.

Robert Smyth



Keep up with us through our website, eClub or Facebook.

LIKE OUR FACEBOOK PAGE!
We appreciate your positive reviews on FB or Trip Advisor!

LAMB'S

Robert Smyth
Producing Artistic Director

Kerry Meads
Associate Artistic Director

Deborah Gilmour Smyth
Associate Artistic Director

January 18 - February 24, 2019

LAMB'S PLAYERS THEATRE A JEWEL IN THE CROWN CITY

Created and Directed by

G. Scott Lacy • Kerry Meads • Deborah Gilmour Smyth • Robert Smyth

ENSEMBLE

Angela Chatelain Avila ●▲

Bryan Barbarin ●

Eileen Bowman ●▲

Jim Chovick ●

Michael Louis Cusimano ●▲

Cynthia Gerber ●

Caitie Grady ■▲

Brian Mackey ●▲

Kerry Meads ■▲

Luke Monday ●▲

Cashae Monya ●▲

John Rosen ●

Deborah Gilmour Smyth ■▲

Robert Smyth ■

Fernando Vega ●▲

Joy Yandell ●▲

BAND

Cris O'Bryon ● *Band Leader / Keyboards*

Feb 10-24, G. Scott Lacy ● *Band Leader / Keyboards*

Rik Ogden ● *Guitar and Reeds*

Dave Rumley ● *Percussion*

Oliver Shirley ● *Bass*

INTERMISSION

Refreshments are available in the lobby and the theatre's cafe

Musical arrangements by Vanda Eggington, G. Scott Lacy, Jon Lorenz & Deborah Gilmour Smyth
Lyrics for The Servant of Two Masters, David McFadzean

Scenic Design

MIKE BUCKLEY ●

Costume Design

JEANNE REITH ●

Lighting Design

NATHAN PEIRSON ■

Projection Design

MICHAEL MCKEON ●

Sound Design

PATRICK DUFFY ●

Properties

RACHEL HENGST ●

Stage Manager

MARIA MANGIAVELLANO ●▲

Choreography Consultant

JAVIER VELASCO ●

Administrative Assistant:

Christopher M Nelson

Production Assistants

Rachel Hengst, Brenna Peirson

Production Team Director

Nathan Peirson

Shop Foreman Josh Longfellow

Technicians

Mathys Herbert,

Paul Morgavo, Chris Pittner,

Dean Collins, Kate Reynolds

Costume Crew

Manager/Jemima Dutra

Stitchers/ JoClare Longfellow,

Virginia Longfellow

Corina Martinez

Wigs: Connie Brugman

Director of Patron Services

Deborah Gilmour Smyth

Box Office Manager

Caitie Grady

Encore Manager Jordan Miller

Administrative Assistant

Amanda Graham Hyden

■ LAMB'S Company Member ● Lamb's Associate Artist ▲ Appearing courtesy of Actors' Equity Association

© 2019 • Lamb's Players Theatre, P.O. Box 182229, Coronado, CA 92178

lambplayers.org • 619.437.6000

PROFILES



Angela Chatelain Avila
Ensemble

Angela is elated to be returning to the Lamb's stage after having been seen here as Jamie Morgan in *Festival Of Christmas*, and Ex-Girlfriend in *Once*. Originally from Utah, Angela has worked at many theatres across the country including The Mountain Playhouse, Pioneer Theatre Company, Salt Lake Acting Company, and Hale Centre Theatre. Favorite roles include Esmerelda in *The Hunchback of Notre Dame*, The Narrator in *Joseph and the Amazing Technicolor Dreamcoat*, Mary Lou in *Cowgirls*, The Witch in *Big Fish*, and Little Red in *Into The Woods*. Angela is a proud member of Actor's Equity. Thank you as always to William for his constant love and support.



Bryan Barbarin
Ensemble

Bryan's credits at Lamb's include *OZ*, *You Can't Take It With You*, *WIT*, *Around the World in 80 Days*, *The Music Man*, *The Book of the Dun Cow*, *The Glory Man*, *Harvey*, *An American Christmas*, *Godspell*, *The Fantasticks*, *Hello, Dolly!* Regional: *Parade* (Jim Conley), *Man of La Mancha* (Sancho), *The Threepenny Opera* (Crooked Finger Jake), *Joseph and the Amazing Technicolor Dreamcoat* (Judah), *Sideshow* (Jake), and *Little Shop of Horrors* (Audrey 2). Bryan now works full time as lead singer of The Routine, a Rock N' Roll band based in San Diego. You can find them at www.Theroutineband.com.



Eileen Bowman
Ensemble

Eileen is over the moon to be back at Lamb's in this very special production. She was last seen as Velma Von Tussle in *Hairspray* at SDMT and *20th Century* at Cygnet. A native San Diegan, she has been performed in Las Vegas, Lake Tahoe, and Japan, but she loves her home town. Favorite roles are Agnes Gooch in *Mame* at SD Lyric Opera, Miss Rona in *Spelling Bee* at NCRT, Eliza Doolittle in *My Fair Lady* and Lina Lamont in *Singing in the Rain* both at Starlight. She played Grandma Who for 13 years in The Old Globe's *How the Grinch Stole Christmas* directed by Tony award-winner Jack O'Brien. She spends lots of time in Los Angeles doing commercials and television. She dedicates

her performance to her sweet perfect husband of 18 years and to her wonderful family. To her precious Lilly and Jack, mommy loves you and misses you.



Jim Chovick
Ensemble

43rd production with LPT: *Noises Off*; *You Can't Take It With You* (2X); *Wit*; *See How They Run*; *Joe vs The Volcano*; *Guys & Dolls*; *Harvey*; *Joyful Noise*; *Room Service*; *Boomers* (twice); *The Voyage Inheritance*; *Amadeus*; *Rehearsal for Murder*; *The Winslow Boy*; 1776; *A Man For All Seasons*; *Ring Round the Moon*; *My Fair Lady*; *The Lion, the Witch, and the Wardrobe*; *A Woman of No Importance*; *The Mystery of Edwin Drood*; *Festival of Christmas* 7 productions and 12 productions of *An American Christmas*. Other Theaters: The Old Globe, Cygnet (Resident Artist), La Jolla Playhouse, SD Rep, NCRT (Associate Artist), SDMT, NVA, Moxie, Intrepid (Resident Artist), Ion, Playwrights Project, Sledgehammer, Moonlight, Evoke Dance Theater, Starlight, Avo@Moonlight, 6th@Penn, The Ark, CCT, Mystery Cafe, SRT and The Fritz. Awards: San Diego Critics Circle, Backstage West Dramalogue, KPBS Patti, Bille and Robby.



Michael Louis Cusimano
Ensemble

Michael is back at Lamb's and it feels so good! He was most recently seen on the Lamb's stage busking as the Guy in *Once* and has appeared here in *Big Fish*, *American Rhythm*, and *Festival of Christmas: North of Normal*. San Diego and SoCal credits: West Coast Premieres of *This Beautiful City* and *Homos, or Everyone in America* at Diversions; *Spamalot* (Lancelot) at Moonlight Amphitheatre, *Last Night in Town* (Ben) at SDMT, *The Rocky Horror Show* (Riff Raff) and *On the 20th Century* (Bruce Granit) at Cygnet, *Metamorphoses* (Orpheus) at Santa Barbara Ensemble Theatre, *The 39 Steps* (clown) at Glendale Centre Theatre and *Grease* (Danny Zuko) at Cabrillo Music Theatre. TV: Devil in the Details on Investigation Discovery. Michael is a BFA grad of Carnegie Mellon School of Drama. Follow Michael and his music on Instagram @koozimano and on YouTube MichaelLCusimano



Cynthia Gerber
Ensemble

Cynthia was a member of LPT's Resident Ensemble from 1988 to 2001 and is now an Associate Artist. Most recently she played the role of Margie Swanson in *The Festival of Christmas Fargo North of Normal* and *Silent Sky*, *The Miracle Worker*, *The Nerd*, *An American Christmas* and *You Can't Take It With You*. Prior to that you saw her in *Twelfth Night*, *Quilters*, *Wit* and Lamb's annual *Festival of Christmas*. Favorite productions at LPT include *Harvey*, *The Hit*, *Susan and God*, *The Miracle Worker*, *Flight*, *Steel Magnolias*, *Quilters*, *Busman's Honeymoon*, *Detective Story*, *See How They Run*, *Amadeus*, *Dracula*, *To Kill A Mockingbird*, and *Ring Round The Moon*. Cynthia is a regular performer with Write Out Loud and last year made her debut with Intrepid Theatre in *Perfect Arrangement* as Kitty Sunderson. Cynthia studied at The American Academy of Dramatic Arts. She is also enjoying her role as Cannon and Spencer's mom.



Caitie Grady
Ensemble

Caitie is grateful to have been cast in over 30 Lamb's Players productions since 2010! Favorites include *Once* (Girl), *Silent Sky* (Margaret), *Equivocation* (Judith), *Twelfth Night* (Viola), *Fiddler on the Roof* (Hodel), *American Rhythm*, *Wit*, *Les Misérables*, *Quilters*, *Mixtape*, and "100 Hours of Stories," the play-reading marathon that landed Lamb's a spot in the Guinness Book of World Records. She has also been seen at Roustabouts Theatre Co. in *Anyone Can Whistle* in concert, and at Cygnet Theatre in *Dogfight* (Rose Fenny), and in their concert readings of *Hair* (Sheila Franklin), *Side by Side by Sondheim* (Woman 2), and *Evita*. In 2017, Caitie performed alongside Danny Burstein and Susan Egan in "To Life! Bock and Harnick on Broadway" with the San Diego Symphony, under the baton of Rob Fisher. BFA: The Boston Conservatory. Caitie is a proud member of Actors Equity, and the happy new wife of Charles Evans Jr.



Brian Mackey
Ensemble

Brian Mackey was last seen at Lamb's in *Noises Off*. Also at Lamb's: *Smoke on the Mountain*, *The Explorers Club*, *Silent Sky*, *The Angel's Arms*, *Equivocation*, *Dinner with Marlene*, *The Nerd*, *An American*

Christmas and *Twelfth Night*. Elsewhere: *The Importance of Being Earnest*, *Travesties*, *The Glass Menagerie*, *History Boys*, *Christmas Carol* (Cygnet - Resident Artist); *Smokefall*, *Abundance* (Backyard Renaissance Theatre); *Romeo, Romeo & Juliet* (Roustabouts); *All My Sons*, *Hamlet*, *A Midsummer Night's Dream*; *The Musical*, *An Enemy of the People* (Intrepid); *In the Heat of the Night*, *The Woolgatherer*, *Bash*; *Latter-Day Plays*, *Jack Goes Boating*, *All in the Timing*, *A Streetcar Named Desire*, *The Grapes of Wrath* (Ion); *In the Next Room*, *The Vibrator Play* (San Diego Rep); *The Pride*, *The Little Dog Laughed*, *Baby with the Bathwater*, *As Much As You Can*, *Corpus Christi* (Diversions); *A Christmas Carol* ('07, '08, '09), *Little Women* (NCRT); *Born Yesterday* (AVO); *Night Sky* (Moolelo); *The Heidi Chronicles*, *Julius Caesar* (NVA); *Side Man* (BANG!). Brian was awarded the 2011 Craig Noel Award for Actor of the Year.



Kerry Meads

Ensemble / Co-Creator-Director
Associate Artistic Director and Director of Educational Outreach, Kerry has been on staff at Lamb's since 1976. As resident playwright, her work includes *Boomers*, *American*

Rhythm, *Dracula*, *My Asparagus Is Growing Fine* and LPT's annual *Festival of Christmas*. Directing credits include *Once*, *Shadowlands*, *MIXTAPE*, *Guys & Dolls*, *Trying*, *An Ideal Husband*, *Pretty Fire*, *Thunder At Dawn*, *Private Lives*, *The Boys Next Door*, *Amadeus*, *Beau Jest*, *The Foreigner* and *You Can't Take It With You*. As a performer she has been seen in such productions as *The Great Divorce*; *Quilters*; *Tartuffe*; *Godspell*; *She Loves Me*; *A Woman of No Importance*; *You're A Good Man, Charlie Brown*; *Till We Have Faces*; *Pump Boys and Dinettes*; *Into The Woods*; *Hello, Dolly!*; *Boomers*, *Leaving Iowa*, *Harvey*, *The Music Man*, *See How They Run* and *Dinner with Marlene*.



Luke Monday
Ensemble

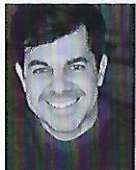
Luke is thrilled to be back onstage with his Lamb's family! Audiences may recognize Luke from the widely-acclaimed run of *Once* last year.

He can also be seen performing at Disneyland in both *Mickey and the Magical Map*, and *Frozen: Live at the Hyperion*. Credits include: Georg Nowack in *She Loves Me* (Scripps Ranch), Andrej in *Once* (Lamb's Players), Sky u/s in *Mamma Mia!* (Nat'l Tour), Tony Elliot in *Billy Elliot* (SDMT), Gabe in *Next to Normal*, Perchik in *Fiddler*, and Chad in *All Shook Up*. Love and gratitude always to JD, Dad, and Mom. Proud member of AEA. @lukepmonday



Cashae Monya
Ensemble

Cashae Monya was last seen as Patrice Cash in Lamb's 41st edition of *Festival of Christmas: Reaching for the Stars*. Other Lamb's credits include: *You Can't Take it with You*, *Glory Man*, and multiple touring seasons with the educational outreach program. Favorite credits include: *Voyeurs de Venus*, *The Revolutionists*, *Our Lady of Kiebo**, *Crumbs From the Table of Joy** & *The Bluest Eye** (Moxie); *Cabaret** & *Lady Day at Emerson's Bar and Grill** (ion), *Avenue Q** (New Village Arts), *Spelling Bee* (North Coast Rep), *The Last Wife** and *Little Shop of Horrors* (Cygnat), *Miss You Like Hell* and *Memphis* (The La Jolla Playhouse). Upcoming: *Hedwig and the Angry Inch* (Diversions Theatre). *Craig Noel Award Nominations.



Cris O'Bryon

Band - Director & Keyboard
Cris is delighted to be performing in the upcoming *Lamb's Valentine Cabaret*. More recent projects include: *Chasing The Song* (workshop), *Midsummer Night's Dream* (La Jolla Playhouse); *The Odd Couple* (North Coast Rep); *Respect* (Act II Productions); *Moonlight & Magnolias* (Scripps Ranch); *Footloose* (SDMT); *The Foreigner*, *Twelfth Night*, *Festival of Christmas* (Lamb's Players), and *Legally Blonde* (Moonlight Stage). He is also a voiceover artist for clients such as Proctor & Gamble, SDCCU, DARPA, Jack in the Box, Dean Koontz, and Qualcomm. Cris maintains a private voice/acting/piano, and audition studio. His clients have worked on Broadway, National Tours, top regional theatres, and academic programs NYU-Tisch, Indiana, PACE, Hartt, Boston Conservatory, CCM, Loyola, AMDA, and Northwestern. His increasingly favorite role is Dad, to 4 year-old daughter, Avery.



Rik Ogden

Band - Guitar/Reeds
Rik is in his 22nd season with Lamb's and has been in over 100 productions, most recently *Once* and *Smoke on the Mountain*. He is a graduate of UCSD, teaches at Carlsbad Village Music, and plays with the country/rock band "Free Beer."



Dave Rumley
Band - Percussion

This production of *Jewel in the Crown City* marks David's 20th year with Lamb's Players Theatre. Past credits include: *Once*, *Persuasion*, *miXtape*, *American Rhythm*, *Boomers*, *My Fair Lady*, *The Fantastiks*, *Guys and Dolls*, *Quilters*, *Godspell*, *Joseph and the Amazing Technicolor Dreamcoat*, *South Pacific*, and many more. He has also performed with locally with Cygnat, SDMT, San Diego Rep, North Coast Rep, and Coronado Playhouse. When not performing, David runs a successful photography business.



Oliver Shirley
Band - Bass

An Associate Artist with Lamb's for over twenty years with nearly fifty productions. Received a BA in Music from SDSU and a MA in Music from UCSD, where he studied with world renowned Double Bassist Bertram Turetzky. Toured nine years with the US Navy Band and has played for U.S. Presidents Carter, Ford, Reagan, Bush and many foreign dignitaries. Performed at the North Sea Jazz Festival in Holland and the Montreux Jazz Festival in Switzerland with jazz trumpet great Clark Terry. Played the world premiere of a jazz version of "A Midsummer Night's Dream", written and directed by drum legend Max Roach. Played double bass with the La Jolla Symphony Orchestra for five years, three as Principal. Favorite LPT productions include *Boomers*, *1776*, *Quilters*, *Pippin*, *miXtape*, *Pump Boys and Dinettes*, *Godspell*, *American Rhythm*, *Guys and Dolls*, *Into the Woods*, *The Secret Garden*, *South Pacific*, *Hello Dolly*, *She Loves Me*, *My Fair Lady*, *Private Lives*, *The Mystery of Edward Droad*, *Joe vs the Volcano*, *Festival of Christmas '13*, *Joseph and the Amazing Technicolor Dreamcoat* and *West Side Story*.



Deborah Gilmour Smyth

Ensemble / Co-Creator-Director
Associate Artistic Director and director of Patron Services, Deborah has been a member of the Lamb's resident ensemble since 1979.

Originally from the East Coast, she has lived all over the United States and studied music and theatre at San Francisco State University. With over 200 productions to her credit, she is a seven-time recipient of the San Diego Theatre Critics' Circle's Craig Noel Award and has been honored with Backstage West and numerous Patte awards for performance, original music, sound design. At Lamb's Deborah has performed in over 160 productions, directed over 70 productions, sound

designed, written original music, or musically directed over 80 productions. Deborah and her husband, Producing Artistic Director Robert Smyth, and their buddy "Banjo Billy" make their home in Coronado.



Robert Smyth

Ensemble / Co-Creator-Director
LAMB's Producing Artistic Director joined Lamb's Players as an actor and director in 1976. He had a vision to start a resident repertory company and in '78 Lamb's Players Theatre opened in National City. In 1994 LAMB'S brought the old performance space in Coronado's historic Spreckels Building back to life as its resident theatre. Robert has directed more than 160 productions for the company, including *Godspell*, *The Explorers Club*, *Les Miserables*, *Room Service*, *Hamlet*, *The Light in the Piazza*, *Till We Have Faces* and *Joyful Noise*, here and Off-Broadway. He and his wife - director, actor, composer, Deborah Gilmour Smyth - make their home in Coronado.



Fernando Vega
Ensemble

Fernando is a Lamb's veteran. He has appeared in theatre productions throughout San Diego including: *Pippin*, *She Loves Me*, *The Hunchback of Notre Dame*, *Joseph*, *Godspell*, *An American Christmas* and *Oz* (Lamb's); *Corridos REMIX*, *Sweet 15*, *Nuevo California*, *The Merchant of Venice*, *The Buddy Holly Story*, *Working* (SD REP); Cabaret green show for Barry Edelstein's *Taming of The Shrew* (Idaho Shakespeare); and *Man of La Mancha* (The Welk). Fernando has lectured at California State University San Marcos and UCSD (Marshall college). Training: Deborah Smyth (Lamb's); Craig Noel's Teatro Meta (The Globe) and Vibrant Being training (Luis Valdez El Teatro Campesino). Fernando holds a bachelor of fine arts in Musical Theatre.



Joy Yandell
Ensemble

Joy is honored to return to Lamb's for such a glorious celebration! Lamb's credits include: *miXtape*, (Craig Noel Award), Narrator in *Joseph and the Amazing Technicolor Dreamcoat*, *American Rhythm*, *Festival of Christmas*, *An American Christmas*, BEST of Festival Christmas CD's.

Regional; Original cast of *Jersey Boys* and *Dracula the Musical* - La Jolla Playhouse; Mrs. Wilkinson in *Billy Elliot*, Georgie in *The Fully Monty* and Violet in *9 to 5 The Musical* - San Diego Musical Theatre; Sally in *Cabaret* - Cygnat Theatre; *I Love You, You're Perfect...*, - Candlelight Pavilion and San Diego CLO; Janis Joplin in *Beehive*, the 60's Musical - Miracle Theatre Productions; New York; *Freedom Riders* - New York Musical Festival. Joy is also an ensemble member with Off Broadway Live. Heavenly Father, Mommy, Michael, Waverly and Charlton, I love you, best of all! 1 Timothy 1:16



G. Scott Lacy

Keyboard and Conductor
Co-Creator-Director
G. Scott Lacy is thrilled to return home to Lamb's Players Theatre. With LPT: *Once* (Craig Noel Nomination), *Les Misérables* (Craig Noel Award) *Fiddler On The Roof* (Craig Noel Nomination) *An American Christmas*, *Festival of Christmas*, *Godspell*, *Quilters*, *Joseph...*, *Dreamcoat*, *American Rhythm*, *Boomers*, *Amadeus*, *Pump Boys and Dinettes*, *Into The Woods*, *The Secret Garden*, *Hello, Dolly!*, *The Music Man*, and *The Light In The Piazza*. Mr. Lacy has musical directed 165 productions in his award winning career, 11 recordings, 40 cabaret shows that have toured nationally and internationally, and is the creator and founding partner of SOCIETY CABARET. www.gscottlacy.com



Mike Buckley

Scenic Design
Since 1984 Mike has designed over 200 productions at Lamb's, as well as shows at San Diego Rep, The Laguna Playhouse and SDMT. Recent favorites include *The Explorer's Club*, *Beau Jest*, and *Shadowlands* here at Lamb's and *American Idiot* at Southwestern College, where he teaches design and scriptwriting. Also a playwright, his romantic comedy *The Hit* had an extended run at Lamb's and then the Horton Grand Theatre and his set earned Mike his fifth Patte Award. As an actor, Mike has appeared in many shows at Lamb's, including *The Nerd*, *Beau Jest*, *Johnny Pye* and *the Foolkiller* and *Boomers*.



Jeanne Reith

Costume Designer
Jeanne's work in 2018 with Lamb's include *Once* and *Persuasion*, *A Little Night Music* with Cygnat, and *Smokefall* with Backyard Renaissance. Jeanne has worked with Lamb's for 28 years and was Resident Designer

for 15 of those years doing awarded productions like *Amadeus*, *Tarantara*, *Oz*, and *Servant of Two Masters* to name a few. *The Festival of Christmas* productions are one of her favorites, beautiful message with memorable musical arrangements that send all home happy. Her years in Theatre have been awarded by critics like the Craig Noel Critics Circle Awards, Patte Awards, Critic Awards in Los Angeles and Santa Barbara. She teaches Fashion History at San Diego Mesa College.



Nathan Peirson
Light Designer
a graduate of Biola University, Nate is Lamb's Director of Production. He has been with Lamb's since 1982 working as photographer, set construction, lighting designer and performer.



Patrick J. Duffy
Sound Designer
Favorites have been MacDuff in *Macbeth* at Intrepid, and Hyde in *Dr. Jekyll and Mr. Hyde* at Ion. Other stage credits include *Pete N Keely*, *The Book of the Dun*

Cow, *Smoke on the Mountain*, *Cold Comfort Farm*, *South Pacific*, and *Rehearsal for Murder*. Patrick won the Craig Noel "Outstanding Sound Design" award for *Les Misérables*, and also designed *Once*, *MiXtape*, *Fiddler on the Roof*, *Pump Boys & Dinettes*, *Godspell*, *Boomers*, *The Fantasticks*, *The Light in the Piazza*, *Joseph*, *American Rhythm*, *The Secret Garden*, and *Enchanted April*.



Michael McKeon
Projections Designer
Grateful to be part of this fantastic team at Lamb's for *A Jewel in the Crown City*. He's an avid Designer, Painter, Builder, Sculptor, Photographer, Videographer, Teacher and "Maker of Things."

In SD theaters, I've worked as a Scenic Designer/Builder, Scenic Artist, Properties Designer, Multimedia/Video Designer and Stage Manager for numerous productions and special events. Some favorites: *Killer Joe* (Craig Noel Award - Compass); *Pageant*, *A Christmas Carol* (Cygnets);

SideMan (Diversionary); *Quality of Life*, *End of the Rainbow*, *Midsummer* (Intrepid); *Seminar*, *Taming of the Shrew* (Intermission); *Mixtape*, *Trying*, *Joe vs. The Volcano*, *39 Steps*, *Silent Sky* (Craig Noel Award) (Lamb's). See my work at MichaelMcKeon.com



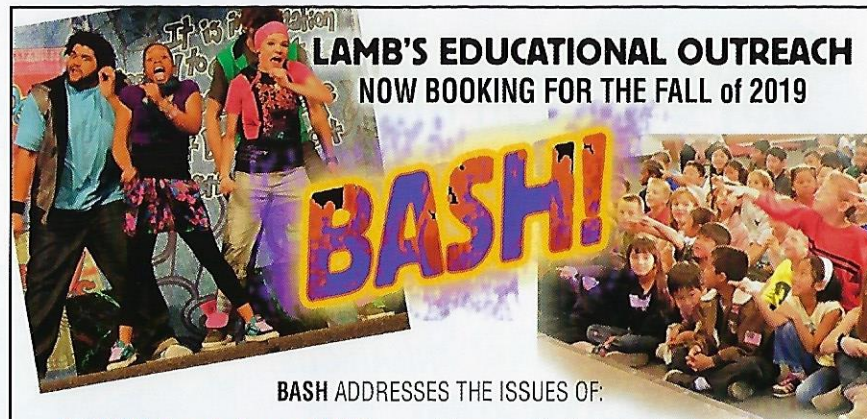
Rachel Hengst
Property Master
Rachel has worked with Lamb's Players Theater since 2013. She made her professional theater debut in *MiXtape* as the Assistant Stage Manager and has learned

so much since then. Her Prop Design credits include Lamb's Players productions of *You Can't Take it With You*, *West Side Story*, *Joseph and the Amazing Technicolor Dreamcoat*, *The Wizard of Oz*, the latest incarnation of *MiXtape*, *The Nerd*, *Miracle Worker*, *Dinner with Marlene*, *Beau Jest*, *Shadowlands*, *Silent Sky*, *Big Fish*, *Camping with Henry and Tom*, *Noises Off*, *Once*, and *Persuasion*. She thanks her family for their endless support and for God's guidance in her life.



Maria Mangiavellano
Stage Manager
For Lamb's Maria has stage managed: *Once*, *Beau Jest*, *Shadowlands*, *The Explorers Club*, *OZ!*, *The Glory Man*, and *MiXtape*, in addition to *An*

Inspector Calls; *Enchanted April*; *Godspell*; *The Glass Menagerie*; *Room Service*; *Boomers* (x 3); *The Voyage Inheritance*; *The Secret Garden*; and *Festival of Christmas* and many other wonderful shows. Elsewhere she has stage managed *The Rocky Horror Show* and *Dogfight* for Cygnets Theatre Company; *Travesties*, *The Importance of Being Earnest*, *Cabaret*, *Pageant*, and *Man of La Mancha* for North Coast Repertory Theatre and six productions for *Moonlight* at the Avo Playhouse and *Moonlight Stage Productions*, La Jolla Playhouse, the California Shakespeare Festival, San Diego Repertory Theatre, and Cincinnati Playhouse in the Park. She holds an MFA from UCSD.



LAMB'S EDUCATIONAL OUTREACH NOW BOOKING FOR THE FALL of 2019

BASH ADDRESSES THE ISSUES OF:

- **BULLYING, Face-to Face or CYBER** - provides practical strategies to deal with it
- **BOREDOM** - approaches it with creativity and imagination
- **PEER PRESSURE** - encourages respect for one another

ALSO HIGHLIGHTING THE VALUES OF: **COOPERATION** and Teamwork
COMMUNITY and Diversity

lambplayers.org or call 619-437-6000

UPCOMING

TWO LAMB'S Cabarets

A dozen of San Diego's best singers present two delightful evenings.

SUNDAY, FEB 10, 6:30pm

Valentines

The Perfect Valentine Date!

SUNDAY, MARCH 17, 6:30pm

St. Patricks

lambplayers.org • 619.437.6000