

SD OPERA

Wolfgang Amadeus Mozart

THE MARRIAGE OF FIGARO

San Diego Civic Theatre
October 20, 23, 26, 28M, 2018

CAST:

(in order of vocal appearance)

Figaro	Evan Hughes*
Susanna	Sarah Shafer*
Dr. Bartolo	Ashraf Sewailam
Marcellina	Susanne Mentzer
Cherubino	Emily Fons
Count Almaviva	John Moore*
Don Basilio	Joseph Hu
Countess Almaviva	Caitlin Lynch*
Antonio	Scott Sikon
Don Curzio	Joseph Hu
Barbarina	Lisa Frisque
Peasant Girls	Erica Austin Laura Bueno
Conductor	John Nelson*
Stage Director	Stephen Lawless
Scenic Designer	Leslie Travers*
Costume Designer	Leslie Travers*
Lighting Designer	Thomas C. Hase
Choreographer	Eric Sean Fogel *
Wig and Makeup Designer	Steven W. Bryant
Stage Manager	Mary Yankee Peters
Chorus Master	Bruce Stasyina
Continuo	Bruce Stasyina
Supertitle Coordinator	Oxana Getman
Diction Coach	Emanuela Patroncini

* San Diego Opera Debut

SETTING:

ACT I

ACT II

– 20 Minute Intermission –

ACT III

ACT IV

The approximate run time is three hours and fifteen minutes, including one intermission.

Le Nozze de Figaro
Composed by Wolfgang Amadeus Mozart
Libretto by Lorenzo Da Ponte

Edited for the Neue Mozart-Ausgabe by
Ludwig Finscher

Used by arrangement with European American
Music Distributors Company, U.S. and Canadian
agent for Baerenreiter-Verlag, publisher and
copyright owner.

Based on the play by Pierre-Augustin Caron de
Beaumarchais.

The Marriage of Figaro is a co-production
between San Diego Opera, Lyric Opera of
Kansas City, Opera Philadelphia, and
Palm Beach Opera.

San Diego Opera extends sincere thanks and gratitude to
Lead Production Sponsor **Darlene Marcos Shiley.**

Cast subject to change.

Microphones are used for a radio broadcast on Saturday, June 8, 2019 at 8:00pm on KPBS 89.5FM, 89.1FM La Jolla,
97.7FM Imperial Valley or at www.kpbs.org.

**EMILY FON**(Mezzo-soprano) *Cherubino*

Company appearances: *Zerlina, Don Giovanni* (2015). Notable appearances: Ruby Thewes, *Cold Mountain* (Santa Fe Opera, Opera North Carolina); Sister Helen Prejean, *Dead Man Walking* (Kentucky Opera); the title role, *L'enfant et les*

Sortilèges (Berlin Philharmonic, Seiji Ozawa Music Academy); title role, *Cinderella* (Opéra de Lille); Stéphan, *Roméo et Juliette* (Santa Fe Opera); Cherubino (Canadian Opera Company, The Dallas Opera); Dorabella, *Così fan tutte* (Opera Omaha); Donna Elvira, *Don Giovanni* (Florentine Opera); title roles, *Susanna, Faramondo* (International Händel Festspiele); Sièbel, *Faust* (Atlanta Opera); Prince Orlovsky, *Die Fledermaus*; Nicklausse, *The Tales of Hoffmann* (Chicago Opera Theatre); Megacle, *L'Olimpiade* (Garsington Opera); Sesto, *Julius Caesar* (Michigan Opera Theatre). emilyfons.com

**LISA FRISQUE**(Soprano) *Barbarina*

Company appearances: Cousin, *Madame Butterfly*; chorister, 30+ productions including *Peter Grimes, Nabucco, Murder in the Cathedral, Nixon in China*. Other appearances: FAB United (co-founder).

**JOSEPH HU**(Tenor) *Basilio/Curzio*

Company appearances: Arturo, *Lucia di Lammermoor*; the Steersman, *The Flying Dutchman*; Roderigo, *Otello*; Pong, *Turandot*; Benvolio, *Romeo and Juliet*; Count Lerma, *Don Carlo*; the Messenger, *Samson and Delilah*; Ruiz, the Messenger,

Il trovatore; Don Curzio, *The Marriage of Figaro*; Spoletta, *Tosca*; Borsa, *Rigoletto*; Abdallo, *Nabucco*; Gaston, *La traviata*; Pong, *Turandot*; Remendado, *Carmen*; the Fourth Jew, *Salome*; Judge/Servant, *A Masked Ball*. josephhu.com

**EVAN HUGHES**(Bass-baritone) *Figaro*

Company debut. Notable appearances: Cithéron/the Satire, *Platée* (Sächsische Staatsoper); Theseus, *A Midsummer Night's Dream* (Opera Philadelphia); Astolfo, *Orlando Furioso* (Bolshoi Theater); Nabal, *Les Troyens*, Figaro, *The Marriage of*

Figaro, Leporello, *Don Giovanni* (Sächsische Staatsoper); Nick Shadow/Keeper of the Madhouse, *The Rake's Progress* (National Dutch Opera); Somnus, *Semele* (Komische Oper); Guglielmo, *Così fan tutte*, Leporello/ Masetto, *Don Giovanni*, Angelotti, *Tosca*, Schanard, *La bohème*, Figaro, Angelotti, Emma Becker, *Nachtausgabe*, Achilla, *Giulio Cesare*, Zoroastro, *Orlando*, Don Basilio, *The Barber of Seville*, Pietro, *Simon Boccanegra* (Semperoper Dresden); Figaro (Boston Lyric Opera); Don Basilio, Leporello (Komische Oper Berlin); Theseus, *A Midsummer Night's Dream* (Beijing tour, Aix-en-Provence Festival); Oro, *Semiramide* (Washington Concert Opera); Starveling, *A Midsummer Night's Dream* (Metropolitan Opera); Zuniga, *Carmen*, Don Fernando, *Fidelio* (Santa Fe Opera). evanhughesbassbaritone.com

**CAITLIN LYNCH**(Soprano) *Countess Almaviva*

Company debut. Notable appearances: *The Countess* (Metropolitan Opera, Palm Beach Opera, Seattle Opera, Glimmerglass Opera, Lyric Opera Baltimore, Michigan Opera, Opera Lyra Ottawa); the First Lady, *Pamina, The Magic Flute*, *Biancofiore,*

Francesca da Rimini, *Cynthia*, *Two Boys* (Metropolitan Opera); *Konstanze, Die entführung aus dem Serail* (Madison Opera, Arizona Opera); *Donna Anna, Don Giovanni* (English National Opera, Pittsburgh Opera, Green Mountain Opera Festival, Michigan Opera Theatre); Micaëla, *Carmen* (Seattle Opera, Seiji Ozawa Music Academy); *Donna Elvira, Don Giovanni* (Utah Opera, Madison Opera, Opera Carolina); *Violetta, La traviata* (Chautauqua Opera, Arizona Opera, Des Moines Metro Opera); *Yadwiga, Enemies, a Love Story* (Palm Beach Opera); *Marguerite, Faust* (Michigan Opera Theatre); *Eliza, Dark Sisters* (Gotham Chamber Opera, Opera Company of Philadelphia); *Fiordiligi, Così fan tutte* (Opera Carolina, Arizona Opera, Palm Beach Opera); *Alice Ford, Falstaff* (Opera Cleveland, Boston Youth Symphony); *Musetta, La bohème* (Nashville Opera); *Leila, The Pearl Fishers* (Opera Cleveland); *Mrs. Gobeineau, The Medium* (Spoleto Festival USA). caitlinlynchsoprano.com

**SUSANNE MENTZER**(Mezzo-soprano) *Marcellina*

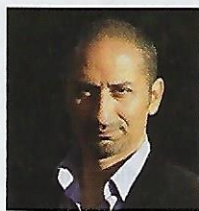
Company appearances: *Rosina, The Barber of Seville*; *Octavian, Der Rosenkavalier*. Notable appearances: *Marcellina* (Metropolitan Opera, Michigan Opera Theatre, Milwaukee Symphony); *Beggar Woman, Sweeney Todd* (Opera Theatre

St. Louis); *Mrs. Patrick DeRocher, Dead Man Walking*; *Nellie, Wuthering Heights*; *Cherubino, The Marriage of Figaro*; *Idamante, Idomeneo*; *der Komponist, Ariadne auf Naxos*; *Octavian, Der Rosenkavalier*; *Dorabella/Despina, Così fan tutte*; *Rosina, The Barber of Seville*; *Adalgisa, Norma*; *Jane Seymour, Anna Bolena*. Recitals: Great Performers, Alice Tully Hall; NY Festival of Song; Tisch Center for the Arts. susannementzer.com

**JOHN MOORE**(Baritone) *Count Almaviva*

Company debut. Notable appearances: *Figaro, The Barber of Seville* (Seattle Opera, Hyogo Performing Arts Center, Santa Cruz Symphony, Opera Omaha); *Hannah Before, As One* (Des Moines Metro Opera); *Johannes "Pa" Zegner,*

Proving Up (Opera Omaha); *Achilla, Giulio Cesare* (Glyndebourne Festival); *Jan, Breaking the Waves* (Opera Philadelphia, Beth Morrison Projects); *Moralès, Carmen*, *Nachtigal, Die Meistersinger von Nürnberg*, *Fléville, Andrea Chénier*, *Yamadori, Madama Butterfly*, *Donald, Billy Budd*, *Papageno, The Magic Flute* (The Metropolitan Opera); *Papageno*, (Seattle Opera, Portland Opera); *Count Almaviva* (Seattle Opera, Atlanta Opera); *Adario, Les indes galantes* (Bayerische Staatsoper); *Tadeusz, The Passenger* (Florida Grand Opera); *Donald* (Glyndebourne at BAM); *Guglielmo, Così fan tutte* (Hyogo Performing Arts Center). moorebaritone.com

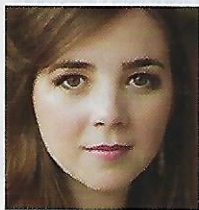


ASHRAF SEWAILAM

(Bass-baritone) *Bartolo*

Company appearances: Cappadocian, *Salome*; Third Tempter/Third Knight, *Murder in the Cathedral*; King, *Aida*; Count Horn, *A Masked Ball*; Leporello, *Don Giovanni*; Alidoro, *Cinderella*. Notable appearances: Leporello (Opera Colorado,

Seattle Opera); Sparafucile, *Rigoletto*, Alidoro (New Zealand Opera); the Mandarin, *Turandot*, Colline, *La bohème* (Seattle Opera); Monterone, *Rigoletto* (Opera Grand Rapids, Opera Toledo, Opera Carolina); Colline (Lake George Opera, Mobile Opera, The Chattanooga Symphony and Opera); Ferrando, *Il trovatore* (Virginia Opera, Mobile Opera); Mustafá, *The Italian Girl in Algiers* (Opera Southwest); Basilio, *The Barber of Seville*, Pirate King, *The Pirates of Penzance* (Lyric Opera San Diego); Bonze, *Madama Butterfly* (Virginia Opera); Sparafucile, Alidoro (Fresno Grand Opera); Ferrando, *Secret Police Agent in The Consul* (Chautauqua Opera); the Captain, *Florencia en el Amazonas* (Madison Opera); Director, *The Cunning Little Vixen* (Dell'Arte Opera). uzanartists.com

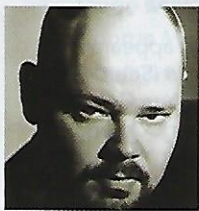


SARAH SHAFER

(Soprano) *Susanna*

Company debut. Notable appearances: Azema, *Semiramide* (Metropolitan Opera); Leïla, *The Pearl Fishers* (Tulsa Opera); Zerlina, *Don Giovanni*, Pamina, *The Magic Flute*, Rosetta, *Two Women*, Mary Lennox, *The Secret Garden* (San Francisco Opera);

Adina, *The Elixir of Love*, Nuria, *Ainadamar*, Voice from Heaven, *Don Carlo*, Papagena, *The Magic Flute* (Opera Philadelphia); Barbarina, *The Marriage of Figaro* (Glyndebourne Festival); Knoxville: *Summer of 1915* (Malmö Symphony Orchestra); Mozart's *Mass in C Minor* (Utah Symphony Orchestra); *Carmina Burana* (San Antonio Symphony); Mozart's *Requiem* (Omaha Symphony); Mahler's *Resurrection Symphony* (Cheyenne, Williamsport Symphony Orchestras); *Talking to Aphrodite* (Sejong Soloists at Carnegie Hall); Mendelssohn's *St. Paul* (Carnegie Hall, New York Choral Society); Handel's *Israel in Egypt* (New York Choral Society); Mahler's *Resurrection Symphony* (New York Youth Symphony, Carnegie Hall). sarahshafersoprano.com

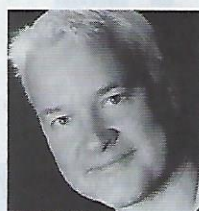


SCOTT SIKON

(Bass-baritone) *Antonio*

Company appearances: Superintendent Budd, *Albert Herring*, Antonio, *Alcindoro*/Benoit, *La bohème*, Christian, *A Masked Ball*, Steve Hubble, *A Streetcar Named Desire*, Count Monterone, *Rigoletto*, Montano, *Otello*, The Bonze, *Madama*

Butterfly, Dikoi, Katya Kabanova, Schounard, *La bohème*, Curio, *Julius Caesar in Egypt*, Morales, Carmen, Fiorello, *The Barber of Seville*, the Second Philistine, *Samson and Delilah*, Reinmar von Zweter, *Tannhäuser*, Sacristan, *Tosca*, Wagner, *Faust*, Nazarene, *Salome*, Corporal, *The Daughter of the Regiment*, soloist, 50th Anniversary Celebration Concert, Marquis D'Obigny, *La Traviata*, the Mandarin, *Turandot*.

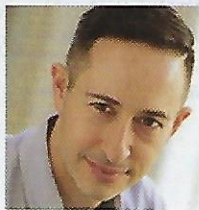


STEVEN W. BRYANT

Wig & Makeup Designer

San Diego Opera: 1985 *Peter Grimes*, debut; 2006 – current, Wig and Makeup Designer. Recent: Santa Fe Opera, Opera Theatre of Saint Louis, New York City Opera, The Dallas Opera, Teatro Colon, Royal Opera (Oman). World Premieres:

Leonard Bernstein's *A Quiet Place*, Tobias Picker's *Emmeline*, Tom Pasatieri's *Frau Margot* (costume design). Broadway: Julie Taymor's *Green Bird* and Styne's *Gentlemen Prefer Blondes*.



ERIC SEAN FOGEL

Choreographer

Company debut. Notable choreographer credits: *Florencia en el Amazonas*, *Candide* (Los Angeles Opera); *Candide*, *The Lion*, *Unicorn and Me* (Washington National Opera); *West Side Story* (Houston Grand Opera, National Symphony Orchestra);

The Cunning Little Vixen (Glimmerglass Festival); *Porgy and Bess* (Seattle Opera); *Norma* (The Metropolitan Opera); *Odyssey*, *Wilde Tales*, *Robin Hood* (Glimmerglass Opera); *Artus-Excalibur* (Theatre St. Gallen); *Princess* (XSBN China). Additional work for: Atlantic Theatre II, Opera Bordeaux, Chicago Lyric Opera, Chicago Opera Theatre, Dallas Opera, Hawaii Opera Theatre, Lyric Opera Kansas City, Opera Philadelphia, Shakespeare Theatre Company, Théâtre du Capitole, Washington National Opera. ericseanfogel.com

THOMAS C. HASE

Lighting Designer

Company appearances: *La bohème*, *Don Giovanni*. Notable designs: *Prima Donna* (Sadler's Wells, New York City Opera, The Luminato Festival), Los Angeles Opera, New York City Opera, BAM Next Wave, Seattle Opera, The Minnesota Opera, The Dallas Opera, Florida Grand Opera, The Portland Opera, New Orleans Opera, Boston Lyric Opera, Canadian Opera Company, Opera de Marseille, Bayerische Staatsoper, Vancouver Opera. haseltd.com



STEPHEN LAWLESS

Stage Director

Company appearances: *Il trovatore*, *The Elixir of Love*. Notable appearances: Glyndebourne Touring Opera (Director of Production, 1986–1991); *Death in Venice* (Glyndebourne Touring Opera, BBC); *Boris Godunov* (Kirov Opera); *The Elixir of Love*

(Los Angeles Opera, Grand Théâtre de Genève); *La clemenza di Tito* (Royal Opera, Covent Garden); *The Marriage of Figaro*, *La bohème* (Lyric Opera of Chicago); *Falstaff* (Los Angeles Opera); *Don Giovanni* (Metropolitan Opera); *Il trovatore*, *Maria Stuarda* (Canadian Opera Company); *Capriccio* (New York City Opera); *Il trovatore* (Houston Grand Opera); *Anna Bolena* (Washington National Opera); *The Marriage of Figaro* (Portland Opera); *Faust* (Santa Fe Opera); *Anna Bolena* (The Dallas Opera).



JOHN NELSON

Conductor

Company debut. Notable appearances: Indianapolis Symphony Orchestra; the Opera Theater of St. Louis; the Caramoor Music Festival; the Chamber Orchestra of Paris (Music Director); National Orchestra of Lyon; National Orchestra of Costa

Rica (Principal Guest Conductor); Nashville Orchestra, Louisville Orchestra (Artistic Advisor); Soli Deo Gloria (co-founder); orchestras of New York, Chicago, Philadelphia, Cleveland, Boston, Los Angeles, San Francisco, Montreal, Toronto, London, Dresden Staatskapelle, Leipzig Gewandhaus, Chamber Orchestra of Europe, Academy of St. Martin in the Fields, Orchestre de Paris, Oslo Philharmonic, Budapest Festival Orchestra, New Japan Philharmonic, Singapore Symphony Orchestra, Malaysian Philharmonic, Hong Kong Philharmonic, China Philharmonic, Shanghai, Guangzhou (conductor); Metropolitan Opera, Chicago Lyric Opera, Santa Fe Opera, Frankfurt Opera, Opéra Bastille, Stuttgart Opera, Grand Théâtre Geneva, Netherlands Opera, Teatro dell'Opera di Roma (conductor). kaylormangement.com



BRUCE STASYNA

Chorus Master

Company appearances: *La Cenerentola*, *Falstaff*, *La traviata*, *The Pirates of Penzance*, *As One*, *María de Buenos Aires*, *Turandot*. Notable appearances: 30th Anniversary Gala, *Hérodiade*, *Leonore*, *La favorite*, *Semiramide*, *Guntram*, *Il corsaro*,

Attila, *I Masnadieri*, *I Capuleti ed I Montecchi*, *La Sonnambula*, *Samson et Dalilah*, *Adriana Lecouvreur* (Washington Concert Opera); *La bohème*, *Werther* (Boston Lyric Opera); *Anna Nicole*, *La périchole*, *Mosè in Egitto* (New York City Opera); *Sweeney Todd*, *La clemenza di Tito*, *Don Pasquale*, *Street Scene* (Wolf Trap Opera); *Tosca*, *Don Giovanni*, *Orazi e Curiazi*, *Nixon in China*, *Carmen*, *Maria Padilla*, *Madama Butterfly*, *Die Zauberflöte*, *Passion*, *Rigoletto*, *Lucrezia Borgia*, *The Handmaid's Tale*, *La traviata*, *Der Fliegende Holländer*, *Norma*, *The Merry Widow* (Minnesota Opera); *Rigoletto*, *Die Fledermaus*, *Il tabarro* (Vero Beach Opera); *Nabucco*, *Romeo et Juliette*, *Lucia di Lammermoor*, *L'italiana in Algieri*, *Le Nozze di Figaro* (Palm Beach Opera); *The Rape of Lucretia*, *Albert Herring*, *Don Pasquale*, *Così fan tutte*, *Orlando* (Green Mountain Opera Festival); *The Grapes of Wrath*, *Die Fledermaus*, *Die Zauberflöte*, *Suor Angelica/Gianni Schicchi*, *Little Women* (Sugar Creek Opera); *Suor Angelica/Gianni Schicchi* (Amalfi Coast Music Festival); Concerts with Marcello Giordani, Deborah Voigt, J'nai Bridges, Maria Aleida, Marina Costa-Jackson.

LESLIE TRAVERS

Set and Costume Design

Company debut. Notable designs: *Francesca da Rimini* (La Scala), *Werther* (Opéra National de Lorraine), *Le Baron Tzigane* (Grand Théâtre de Genève), *Billy Budd* (Opera North/Nederlandse Reisopera), *Fiddler on the Roof*, *La bohème*, *Jenufa*, *The Tales of Hoffmann* (Malmö Opera), *Clemenza di Tito* (Opera Theatre of St Louis), *Twelfth Night* (Manchester Royal Exchange Theatre), *Don Carlos* (Grange Park Opera), *Pleasure*, *Albert Herring*, *Giulio Cesare* (Opera North), *I Puritani* (Welsh National Opera/Den Jyske Opera), *Elysium* (Den Norske Opera), *The Haunted Manor* (Polish National Opera), *Salome* (Santa Fe Opera), *Alice's Adventures in Wonderland* (Opera Holland Park), *Grimes on the Beach* (Opera North/Aldeburgh Music), *Tannhäuser* (Estonian National Opera), *Otello* (Scottish Opera/Opera North), *Don Giovanni* (Garsington Opera), *The Merry Widow*, *I Capuleti e I Montecchi* (Opera Australia/Opera North), *Roméo et Juliette* (Opera Ireland), *L'arbore di Diana* (Palau de les Arts Reina Sophia), *The Children's Crusade* (Luminato Festival), *Véronique* (Buxton), *The Fortunes of King Croesus* (Opera North/Minnesota Opera), *Iolanta/Gianni Schicchi* (Royal Academy Opera), *The Marriage of Figaro* (Graz Opera), *Hans Heiling* (Opéra du Rhin). leslietravers.co.uk

You are invited to hear the stars of the future

METROPOLITAN OPERA
NATIONAL COUNCIL AUDITIONS
Saturday, November 10 at 10:00 AM

Point Loma Nazarene University
Cooper Music Center in Crill Performance Hall
3900 Lomaland Drive, San Diego, CA 92106

For more information, visit sdmonc.org

The Marriage of Figaro CHORUS

SOPRANOS

Erica Austin
Maria Janus
Patricia McAfee +
Eden Tremayne
Tasha Koontz

ALTOS

Mary Boles Allen
Laura Bueno
Sarah-Nicole Carter
Lynsey Swiderska

TENORS

Andrew Bennett
Chad Frisque
Benjamin Plaché
Timothy Simpson*

BASSES

Bernardo Bermudez
David Marshman +
Michael Sokol
Christopher James
Stephens +
Shelby Condray

* Has appeared in 25 or more productions with San Diego Opera Chorus

+ Has appeared in 50 or more productions with San Diego Opera Chorus



Artists and Production Staff are members of the American Guild of Musical Artists, AFL-CIO, the labor union that represents musical artists in opera, concert, and dance in the United States.

The Marriage of Figaro SUPERNUMERARIES

Martin Astl
Dan Denison

Russell King
Lane Lee

2018-19 SEASON ARTISTS

SOPRANOS

Kristin Clayton
Lisa Frisque
Alisa Jordheim
Tasha Koontz
Caitlin Lynch
Sarah Shafer
Eden Tremayne
Sarah Tucker

Jon Keenan
Victor Morris
Daniel Moyer
Felipe Prado
Scott Quinn
Timothy Simpson
Brian Vu
Robert Watson

MEZZO-SOPRANOS

Alissa Anderson
Sarah Nicole Carter
Ginger Costa-Jackson
Emily Fons
Susanne Mentzer
Guadalupe Paz
Frederica von Stade
Tzytle Steinman

BARITONES

Bernardo Bermudez
Scott Conner
Matthew Fallesen
Andrew Konopak
Steven LaBrie
John Moore
Jonathan Nussman
Stephen Powell
Michael Sokol
Anthony Whitson-Martini

TENORS

Alex Alfaro
Humberto Borboa
Stephen Costello
Chad Frisque
Joseph Hu

BASS-BARITONES

Kyle Albertson
Patrick Blackwell
Evan Hughes
Ashraf Sewailam

Scott Sikon

BASSES

Joshua Arky
Shelby Condray
Walter DuMelle
Colin Ramsey
Christopher Stephens

CONDUCTORS

Yves Abel
Juan Carlos Acosta
John Nelson
Bruce Stasyna
Adam Turner
Steven White

DIRECTORS

Michael Cavanaugh
Alan E. Hicks
Kyle Lang
Stephen Lawless
Karen Tiller

SCENERY DESIGNERS

Peter Dean Beck

R. Keith Brumley
Robert Dahlstrom
Leslie Travers
Tim Wallace

COSTUME DESIGNERS

Denitsa Bliznakova
James Schuette
Helen Rodgers
Leslie Travers

LIGHTING DESIGNERS

Peter Dean Beck
Thomas C. Hase
Anne E. McMills
Chris Rynne
Anne-Catherine Simard-Deraspe

CHOREOGRAPHER

Eric Sean Fogel

PIANISTS

Catherine Miller
Sheldon Miller