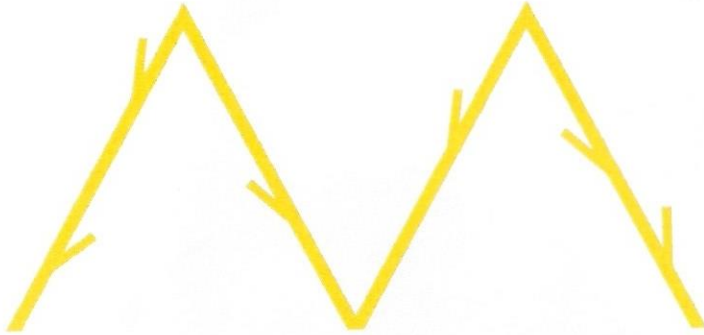


Special Offer from our Events Partner

Winner 'Best Design' and 'Best Cocktails' San Diego Magazine.



MADISON



**Special Offer with your Loneliest Girl Program:
Free dessert w/ any purchase.**

Offer expires 7/1/18

4622 PARK BLVD SAN DIEGO, 92116
(619) 269-6566
<http://www.madisononpark.com/>

THE LONELIEST GIRL IN THE WORLD

**BOOK & LYRICS BY
GORDON LEARY**

**MUSIC BY
JULIA MEINWALD**

**DIRECTED BY
MATT M. MORROW**

STARRING

**STEVE GOUVEIA*, SAM HELDT*, ALLISON SPRATT PEARCE*
SHAUN TUAZON*, LAUREN KING THOMPSON &
MARC ANNE WUEBBEN***

MUSIC DIRECTOR
PATRICK MARION

STAGE MANAGER
KENDRA STOCKTON*

SOUND DESIGNER
MATT LESCAULT-WOOD

PROPERTIES DESIGN
BONNIE DURBEN

*CHOREOGRAPHER &
ASSOCIATE DIRECTOR*
STEPHEN BROTEBECK

COSTUME DESIGNER
ELISA BENZONI

WIG DESIGNER
PETER HERMAN

LIGHTING DESIGNER
CHRISTINA J. MARTIN

SCENIC DESIGNER
ROBIN SANFORD ROBERTS

EXECUTIVE ARTISTIC DIRECTOR
MATT M. MORROW

MANAGING DIRECTOR
JENNY CASE

DIVERSIONARY

*Member of Actors' Equity Association, the Union of Professional Actors and Stage Managers in the United States, appearing under a Small Professional Theatre Contract.

Support for
**THE LONELIEST
GIRL IN THE WORLD**

**SEASON SPONSORS
and
PRODUCTION SPONSORS
Rob Granat & Al Mazur**

**EVENT SPONSORS
Jay Henslee & Christian St. Croix**

SPECIAL EVENT PARTNER



MADISON

This production is also generously supported in part by The Arch & Bruce Brown Foundation and the National Alliance for Musical Theatre's National Fund for New Musicals, The National Endowment for the Arts, and the California Institute for Contemporary Arts.

**THE
LONELIEST
GIRL IN
THE WORLD**

**BOOK & LYRICS BY GORDON LEARY
MUSIC BY JULIA MEINWALD
DIRECTED BY MATT M. MORROW**

FEATURING

(IN ALPHABETICAL ORDER)

STEVE GOUVEIA*	BOB, ET AL
SAM HELDT*	TOMMY
ALLISON SPRATT PEARCE*	ANITA BRYANT
SHAUN TUAZON*	KYLE, ET AL
LAUREN KING THOMPSON	MARY ANN, ET AL
MARCI ANNE WUEBBEN*	KAY, ET AL

*Run time is approximately two hours and 10 minutes
with a 15 minute intermission*

THE LONELIEST GIRL IN THE WORLD is produced by special arrangement with Mark Orsini, BRET ADAMS, LTD., 448 West 44th Street, New York, NY 10036. www.bretadamsltd.net

THE LONELIEST GIRL IN THE WORLD was presented at the National Alliance for Musical Theatre's Festival of New Musicals in 2016. www.namt.org

THE LONELIEST GIRL IN THE WORLD was developed as Ars Nova Uncharted in 2013
Jason Eagan, Artistic Director
Kent Nicholson, Curator

NOTE FROM THE EXECUTIVE ARTISTIC DIRECTOR

Developing and producing new work is at center of what we do at Diversionary. Giving a platform for new work to be introduced and heard in the world is what we do, and encompasses "our vision to amplify the next generation of LGBT voices." At Diversionary, I pride myself on giving these opportunities to writers who are taking serious risks in content and form. We produce daredevils who are courageous enough to try something brand spanking new. I'm grateful that our community is eager to go on an unexpected journey and embrace the offbeat and unusual. This is our sweet spot at Diversionary, and is our greatest asset as a forward-thinking, art-first theatre.



When I first read ***The Loneliest Girl in the World*** I was astounded by the unique point of view it was taking on a vital chapter in LGBT history, the ambitious scope of its story, and the big, juicy heart at the center of it all. I read and listened to this piece right after the election of 2016 and fell in love. Its story of two outsiders, Anita and Tommy, looking for a way into the world around them, coupled with the haunting and intensely emotional melodies of the score, gripped my soul in a way I couldn't shake. I still can't. It gave me insight into my own origin story as a gay man, and what I've always thought of as The Dark Side of culture wars past, and therefore hope for the future.

The Loneliest Girl in the World is the journey of how one person becomes an activist and enacts change, inciting a resounding spike in the Gay rights movement. It is also the story of how one becomes a fundamentalist activist, and starts a crusade. These two points of view come clashing together in such an empathetic way that its resulting sparks and embers illuminate a deep-seeded human need to be seen and heard no matter what your political stance.

The story is told through the lens of popular culture, namely, television. As a director, the challenge of conceptualizing the world of

television on the stage was exhilarating. How the media functions in our world is becoming increasingly complex and dangerous. Looking back at Anita and Tommy's story, the roots of how media and popular culture can shape our lives in sometimes comforting and sometimes dangerous ways is painfully clear.

What makes this musical most unique, to me, is its spirit. Although it deals with the serious business of politics and how a movement is made, Gordon and Julia have crafted the story with a sense of delight, magic and mischief. This coupled with the provocative nature of the time, and the intimacy with which the characters are rendered, makes for an exuberantly original and bold new work.

Bringing this World Premiere to life with this team has been a testament to the galvanizing and inspirational power of theatre. I'm so grateful for every member of our team at Diversionary; they have poured everything into making something brand new for our community. I couldn't think of a better way to segue into Diversionary's 33rd Season, which is about inspiration and what moves us to action. I hope ***The Loneliest Girl in the World*** moves, inspires and incites a lively conversation in your life, encouraging us to continue to make our world a better place to be.

With Gratitude,

A handwritten signature in blue ink that reads "Matt Morrow". The signature is fluid and cursive, with a long horizontal line extending to the right.

Matt M. Morrow
Executive Artistic Director
Director of *The Loneliest Girl in the World*



NOTE FROM THE WRITERS

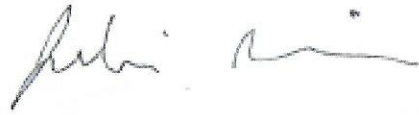
We began writing *The Loneliest Girl in the World* in 2013, inspired by the fascinating footage of Anita Bryant getting hit with a pie. It was silly, momentous, humanizing, and satisfying – all of the things we like in a musical. As we wrote, we were struck by the idea that Anita spent her whole life searching for her “God-given purpose” in pageants, on the radio, and on television. In the ultimate irony, her mark on the world was serving as a catalyst for the very gay rights movement she crusaded against. The movement continued to progress as we wrote, with the Supreme Court affirming marriage equality in 2013 and 2015, President Obama ordering workplace protections for LGBTQ federal employees in 2014, and the military opening its doors to transgender soldiers in 2015.

And then the 2016 election happened. Progress rolled back suddenly with bathroom bills and the rescinding of the orders we’d celebrated just years before. The dialogue changed from hopeful to oppositional, with a gulf between two entrenched sides. There were new Anitas everywhere. As we continued to write, our focus shifted towards how we approach the people that seem like our enemies. In our writing, we look to find the humanity of those who make decisions that we don’t understand. In this climate, does seeking such empathy help or hinder our cause? Is it possible to bridge the divide? We don’t know the answer yet, but we hope that *The Loneliest Girl in the World* inspires you to ask the same questions.

Gordon Leary
Book & Lyrics

&

Julia Meinwald
Composer

A Note About Tommy...

Thom Higgins (June 17, 1950 – November 10, 1994) was a pioneer in the gay rights movement in Minnesota. He was a founding member of FREE (Fight Repression of Erotic Expression), The Gay Imperative, and the Church of the Chosen People, a gay pagan religion. He was a member of the Target City Coalition and the Cuban Refugee Task Force of Positively Gay. He was also the first person in Minnesota to be granted a presidential conscientious objector draft classification in 1969. We don’t know if the real Thom Higgins was a fan of Anita Bryant the same way that our Tommy is, but we do know that his work – with and without a pie – helped to build the community we know today.

SONGS

There Is Always Pie.....	Kay, Tommy
Make Me a Star.....	Anita with Mary Ann & Joanne
That’s Okay, Anita/Dear Tommy.....	Tommy, Anita
The Loneliest Girl in the World.....	Anita
Sing Me the Songs.....	Tommy
You Need Me.....	Bob
That’s Where You’ll Find Me.....	Anita, Kay, Tommy
The Fame Sequence.....	Bob, Anita, Mary Ann
Twin Bed.....	Tommy, Kyle
Anita’s Prayer.....	Anita
Speak.....	Kyle, Bob, Sandra, Kay
Win.....	Anita, Tommy & Company
The Anita Bryant Christmas Spectacular.....	Anita with Lawrence Welk, Billy Graham, Kathie Lee Johnson, Bob Hope
Save Our Children (Preprise).....	Anita
Dear Tommy (Reprise)	Kyle, Anita
Save Our Children.....	Anita, Tommy, Housewives
Let Her Let You Down.....	Kyle
The Letter.....	Anita
If They Could See Us.....	Tommy & Company
Another Face in the Crowd	Tommy
The Crusade.....	Bob, Kay, Tommy
All I See Is You.....	Tommy, Anita
Oh Well.....	Mary Ann Mobley, Dick Clark, Lawrence Welk, Johnny Carson
The Loneliest Girl in the World (Reprise).....	Anita

BAND

Music Director/Keyboard	Patrick Marion
Drums.....	Tom Versen
Bass Guitar	Mackenzie Leighton
Trumpet.....	Armando Silva

Diversionsary is proud to announce our new summer acting program for LGBT+A teens!



TEEN-VERSIONARY

Teen-Versionary is a two Week Acting Camp
July 9th through the 20th.

This summer Teen-Versionary will rehearse and present *queerSpawn* by Mallery Avidon on Diversionsary's Historic Mainstage.

Folks aged 13 to recent high school graduates are welcome to apply for a position in Teen-Versionary. Anyone who wants to feel part of something special are encouraged to apply.

For Questions or more information please contact our Education Associate:
ssullivan@diversionary.org | 619.220.6830 x109

THE COMPANY

PRODUCTION TEAM

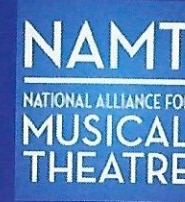
Director	Matt M. Morrow
Music Director	Patrick Marion
Choreographer & Associate Director.....	Stephen Brotebeck+
Stage Manager	Kendra Stockton*
Assistant Stage Manager	Isaac Fowler
Scenic Design.....	Robin Sanford Roberts
Costume Design.....	Elisa Benzoni
Lighting Design.....	Christina J. Martin
Sound Designer	Matt Lescault-Wood
Properties Designer	Bonnie Durben
Wig Designer	Peter Herman
Technical Director	Carleton Starr
Sound Mixer	Caitlin LaMar
Assistant Scenic Design.....	Johnlyn Colcol
Charge Artist	Christie Curran
Master Electrician	Curtis Mueller
Production Assistant.....	Joey Kirkpatrick
Wig Assistant.....	Alberto Alvarado
Dresser	Kate Morton

SPECIAL THANKS

The Queen Bees, Kent Swedell, Robin Reed, San Diego State University, Peter Nordyke, Adam Danska, Kurt Thormodsen, Stu Schwartz and San Diego's awesome Usher Corps.

+ **SDC** The Choreographer is a member of the STAGE DIRECTORS AND CHOREOGRAPHERS SOCIETY, a national theatrical labor union.

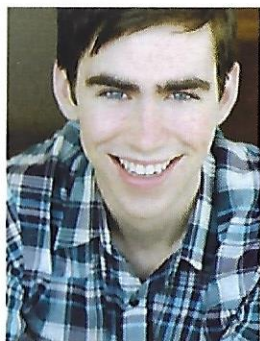
Diversionsary Theatre is a proud member of:



THE COMPANY



STEVE GOUVEIA* (Bob, et al.) was recently seen as Stanley in Lamb's Players production of *Smoke On The Mountain*, and as the Siren in *Shockheaded Peter* at Cygnet Theatre. Other credits include: *Jersey Boys* (Original Broadway Cast/First National Tour/La Jolla Playhouse), *The Collected Works of Billy the Kid* (La Jolla Playhouse), *Buddy: The Buddy Holly Story* (The Apollo Theatre Center, Stage West), *It Ain't Nothin' But the Blues*, *Cabaret* (San Diego REP), *Mixtape* (Lamb's), *Little Shop of Horrors*, *Hedwig & The Angry Inch*, *Pageant*, *The Rocky Horror Picture Show* (Cygnet Theatre), *Sweeney Todd* (The Fritz Theatre), and *Hair* (Starlight Theatre). As a musician, Steve has worked and played with Pete Townshend, Ray Manzarek of The Doors, John Wesley of Porcupine Tree, Micky Dolenz, Frankie Valli and the Four Seasons, Jung-Ho Pak and many others. He has been seen on The Today Show, Late Night With David Letterman, The 60th Annual Tony Awards, and at many Rockers On Broadway concerts in New York. Love to Tricia.



SAM HELDT* (Tommy) is thrilled to be making his Diversionary debut in this role, after participating in the development of this show for over 4 years. Based in New York, he has also developed new work with Playwrights Horizons, TheatreWorks Silicon Valley, Ars Nova, The Civilians, Colt Coeur, Sundance Theatre Institute, New Dramatists, New Georges, The Lark, Pipeline Theatre Company, and a whole host of acronyms (NAMT, NYMF, MTF, GMTWP, AND, MANY, MORE). Thanks to Gordon, Julia, and Matt, as well as Ben, Portia, and Michael. Proud member of AEA. www.samheldt.com



ALLISON SPRATT PEARCE* (Anita) Broadway & Off Bway credits: *Curtains*, *Good Vibrations*, *Cry Baby*, *Enter Laughing*, and *Cabaret* (National Tour). Highlight San Diego roles: SD Rep: Susannah in *Black Pearl Sings*, Emily in *Disgraced*. Cygnet: Katherine in *The Last Wife*, Eliza in *My Fair Lady*, Louise in *Gypsy* -2017 Craig Noel Award Winner. SDMT: Maria in *The Sound of Music*, Judy in *9 to 5*, The Old Globe: Phoebe in *As You Like It*, Viola in *Twelfth Night*, Jane in *Emma*; La Jolla Playhouse: Janice in *Come From Away*, Victoria in *Sideways*. Many national/regional commercials & ads. M.F.A in Drama-USD/Old Globe, B.F.A. in MT- Elon University. Thanks to the team that made this show happen and for my family that allows me to be apart of it. www.allisonsprattpearce.com

THE COMPANY



SHAUN TUAZON* (Kyle, et al.) is excited to return to the Diversionary stage where he was seen in *Dooley* and *Diversionary Cabaret's Altar Boyz*. Other theatrical credits include: *#SUPERSHINYSARA* (La Jolla Playhouse); *Vietgone* (San Diego Repertory Theatre); *Buddy: The Buddy Holly Story* (Intrepid Theatre Company/New Village Arts); *West Side Story* (Lamb's Players Theatre); *The 25th Annual Putnam County Spelling Bee* (Intrepid Theatre Company); *Rent* (San Diego Musical Theatre); *Zanna Don't!* (San Diego Premiere); *Deconstruction of a Drag Queen* (Craig Noel Award Nomination, Circle Circle dot dot); *In the Heights* (Cabrillo Music Theatre); *Dog Sees God* (Breakthrough Workshop Theatre); as well as productions with The Old Globe, North Coast Repertory Theatre, ion theatre, and more. Shaun received his BA in Theatre Arts from SDSU and is a proud member of Actors' Equity Association. Love to Mom, Dad and Justin. www.shauntuazon.com | @ShaunTwaz



LAUREN KING THOMPSON (Mary Ann, et al.) is delighted to return to the Diversionary stage! Previous credits include: *Divine Sister* (Diversionary); *How The Grinch Stole Christmas* (1st & 2nd National Tours); *Animal Crackers*, *Gypsy*, *Hay Fever*, and *The Vortex* (Cygnet Theatre); *Bachelorette* (Backyard Renaissance Theatre); *You Can't Take It With You*, *Joseph...Dreamcoat*, *Guys and Dolls*, *The Music Man*, *Pete 'n' Keely* and *Festival of Christmas 2015-2017* (Lamb's Players Theatre); *To Kill A Mockingbird*, *The Miss Firecracker Contest* (New Village Arts); *First Date*, *Last Night in Town*, and *Joseph...Dreamcoat* (SDMT); *A Midsummer Night's Dream: The Musical* (Intrepid Theatre); *Oklahoma* (Moonlight Stage Productions); and *Stepping Out*, *Hairspray* (Welk Resort Theatre). Lauren received her BFA in Musical Theatre from Cal State University, Fullerton.



MARCI ANNE WUEBBEN* (Kay, et al.) was last seen on the Diversionary stage as Lucinda in *The Mystery of Love and Sex* and is thrilled to be back! She just completed the run of the original play *Beachtown* as Donna French at The San Diego Repertory Theatre. A veteran performer, favorite Regional Credits include: a five year stint as an original cast member of the long running 80's hit, *Mixtape* (Lamb's Players Theatre), Tessie Tura in *Gypsy*, Desiree Armfeldt in *A Little Night Music* (Cygnet Theatre); *Pump*

* Member of Actors' Equity Association, the Union of Professional Actors and Stage Managers in the United States, appearing under a Small Professional Theatre Contract.

THE COMPANY

Boys and Dinettes, *Boomers* (Lamb's Players Theatre); *The Full Monty* (San Diego Musical Theatre); *The Magic Fire* (KPBS Award), *I Do! I Do!*, *Radio Gals* (Moonlight Stage Productions); *She Loves Me* (Laguna Playhouse); *Anything Goes*, *FootLoose* (Welk Resort Theatre); *Company* (Performance Riverside); *I Hate Hamlet* (The Broadway Theatre). Marci has been a licensed Esthetician and Make Up Artist for over 18 years with her business The Beauty Spot. Visit www.marcisbeautyspot.com. Marci is an Associate Artist with Lambs Players Theatre and a proud member of Actor's Equity Association.



JULIA MEINWALD AND GORDON LEARY (The Writers) write aggressively empathetic musical theatre. Their work includes *The Loneliest Girl in the World* (2016 NAMT Festival, 2015 UArts Polyphone Festival, 2014 Ars Nova OutLoud Series), *Pregnancy Pact* (2012 Weston Playhouse premiere, 2011 NAMT Festival, 2011 Yale Institute), *Disappeared* (2009 Lincoln Center Directors Lab), and the short film *Galaxy Comics* (2014 United Airlines in-flight programming.) They are currently at work on *REB+VoDKa+ME* (2017 NYU Tisch New Musical Workshop, 2016 Civilians' FINDINGS Series), *The Magnificent Seven* (2016 Fresh Ground Pepper), and



Something Blue (2014 NYTB New Works Series.) Together, they have developed work in the Dramatists Guild Fellows Program, Ars Nova's Uncharted, The Civilians' R&D Group, Fresh Ground Pepper's Playground Playgroup, the Musical Theatre Factory writers group, the 92Y Musical Theatre Development Lab, and Page 73's Interstate 73. Julia was a participant in the New Dramatists Composer Librettist Development Program, and her other musicals include *Elevator Heart* (2016 New Studio @ NYU, Dixon Place) and *Jack Perry Is Alive And Dating* (2011 NYMF Next Link Selection.) Gordon's other musicals include *Across the River* (2013 Seoul Musical Festival) and *Cheer Wars* (2009 Richard Rodgers Award.) Both are 2007 alumni of the NYU Graduate Musical Theatre Writing Program. gordonandjulia.com.

MATT M. MORROW (Director) See bio under Executive Artistic Director.



STEPHEN BROTEBECK (Choreographer/Associate Director) is thrilled to be making his Diversionary debut with *The Loneliest Girl In The World*. Broadway: *Ghost*, *Peter and the Starcatcher* (Movement Associate). As a director Mr. Brotebeck has helmed the Off and Off-Off Broadway productions of *The Shark Play*, *Breaking The Shakespeare Code*, *St. Francis* (NY Fringe - Excellence in Directing Award), *The Maltese CWalter*, *Greasemonkey* and *Scenes from a Balcony*.

IN PROUD SUPPORT OF DIVERSIONARY THEATRE

ROXANNE GOVARI & TEAM

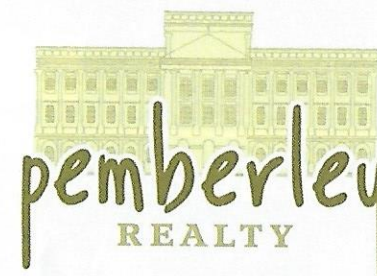
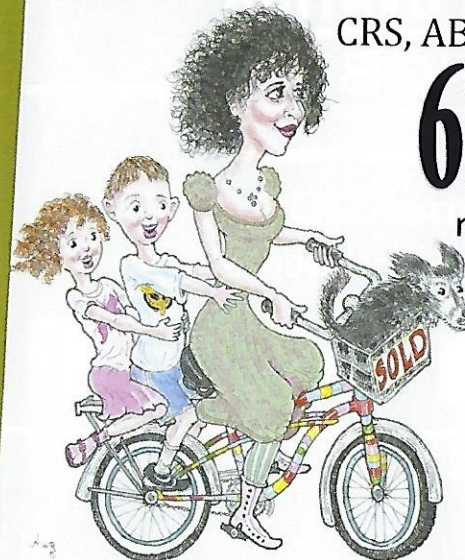
"Committed to Excellence Because We Care!"

CRS, ABR, SRES, REALTOR, BROKER

619-778-0577

roxanne@pemberleyrealty.com

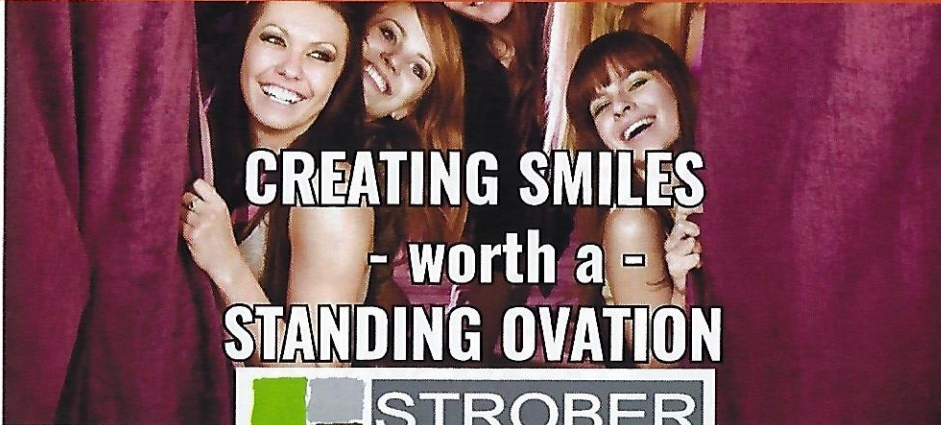
www.pemberleyrealty.com



Hire The Local REALTOR Expert, Sell For More !!!

Proud Member of the Diversionary Theatre!

Cal BRE# 01319244



CREATING SMILES
- worth a -
STANDING OVATION



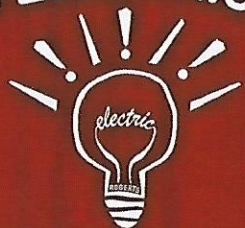
Rod Strober DDS

(619) 299-5925 | stroberdental.com



Keeping Our Customers in Their Best Light Since 1985

ROBERTS ELECTRIC SERVICE



(619) 757-7500

THE COMPANY

Kennedy Center: Spring Gala (Director), *My Fair Lady*, *Camelot* and *Children Of Eden* (Associate Director/Choreographer). Stephen is the Artistic Director of the Okoboji Summer Theatre, in Okoboji Iowa where he has directed *And The World Goes 'Round* and *The Spitfire Grill*. Additional credits as a director/choreographer include *Peter and the Starcatcher*, *Monty Python's Spamalot*, *And The World Goes 'Round*, and *I Love A Piano* at Farmers Alley Theatre; *Looking For Roberto Clemente* at Imagination Stage; American Songbook Hall of Fame Induction Ceremony presented by Michael Feinstein. TV: WPSU Music Theatre Spotlight. BFA, Western Michigan University. MFA, Penn State. Stephen is an Assistant Professor in the MFA Musical Theatre program at San Diego State University where he has directed *Company*, *Enchanted April*, *The Full Monty*, *Jesus Christ Superstar*, *The Drowsy Chaperone* (Craig Noel Award Nomination), and *On The Eve*. SDC member. www.stephenbrotebeck.com

KENDRA STOCKTON (Stage Manager) has previously stage managed at La Jolla Playhouse on *Home of the Brave* and *#SuperShinySara*, as well as Lamb's Players Theatre on *Mixtape*, and San Diego Musical Theatre on *White Christmas*. Her other credits include *Benny & Joon*, *October Sky*, *The White Snake*, *Bright Star*, *Dog and Pony*, *Dr. Seuss's How the Grinch Stole Christmas!*, and *The Few* (The Old Globe Theatre), *Guards at the Taj*, *Come From Away*, *The Darrell Hammond Project*, *The Orphan of Zhao*, *The Who and the What*, *Sideways*, *A Lonely Boy's Guide to Survival (And Werewolves)*, *This Nightingale*, *A Midsummer Night's Dream*, *Restoration*, *Memphis* and *The Night Watcher* (La Jolla Playhouse), as well as *Godspell* and *Memphis* (Broadway).

ROBIN SANFORD ROBERTS (Scenic Designer) At Diversionary: *Sextet*. On Broadway: *It Ain't Nothin' But the Blues*. Old Globe Theatre, over 25 productions including: *Alive and Well*, *The Price*, *Fiction*, *Bus Stop* (Critics Circle award), *Blue/Orange*



"What is it you want, Mary? What do you want? You want the moon? Just say the word and I'll throw a lasso around it and pull it down. Hey. That's a pretty good idea. I'll give you the moon, Mary."

Jonathan Hammond

productions

www.jonathammerproductions.com

video production editing weddings real estate digital marketing

THE COMPANY

and *Betrayal* (Critics Circle award, Patte' award) She has also designed for San Diego Repertory Theatre, Moxie Theatre, Diversionary, Denver Center Theatre Company, Portland Center Stage, Arizona Theatre Company, San Jose' Repertory Theatre and Swine Palace Productions. Ms. Roberts holds a degree in Architecture from LSU and a MFA in Scenic Design from UCSD. She teaches and is the resident scenic designer for the USD Department of Theatre. www.robinsanfordroberts.com

ELISA BENZONI (Costume Designer) is thrilled to be working again with Diversionary Theatre. Select credits include: *The Happiest Place on Earth*, *Ballast*, *Mystery of Love and Sex* (Diversionary Theatre), *Sex with Strangers* (Geffen Playhouse), *The Who and The What*, *Our Town*; *Tall Girls*; *Brahman/I*; *Sam Bendrix at the Bon Soir* (La Jolla Playhouse); *Constellations* (Old Globe); *Two Gentlemen of Verona*, *Pericles*, *Prince of Tyre*, *Reckless*, *Much Ado About Nothing* and *Measure for Measure* (USD/Old Globe); *Travels with my Aunt*, *The Illusion*, *Laughter on the 23rd Floor*, *The Cocktail Hour*, *Fox on the Fairway* (Nominated for a Craig Noel Award), *Chapatti*, *Sherlock Holmes and the Adventure of the Great Nome Gold Rush* (North Coast Repertory Theatre); *Awake and Sing*, *Sylvia* (New Village Arts); Assistant costume credits: *Dialogues des Carmelites* (Teatro Petruzzelli, Bari), *Paradise Found* (Menier Chocolate Factory, London), *Milk Like Sugar* (La Jolla Playhouse), *As You Like It*, *Midsummer Night's Dream* (The Old Globe). Elisa holds a costume design MFA from UCSD. www.elisabenzoni.com

CHRISTINA J. MARTIN (Lighting Designer) will be debuting at Diversionary Theatre this season. She is honored to be part of this team! She has had a vibrant career thus far with some of her favorite designs including: *Miracle on 34th Street* (SDMT), *To Kill a Mockingbird* (ECT), *The Full Monty* (SDSU), *Pump Up the Volume* (SDMT) and more. Christina's other theatre work includes: *The Importance of Being Earnest* (Artists' Ensemble Theatre), *Jacob Marley's Christmas Carol* (Thunder Bay Theatre), *Dogfight* (Rockford University), *Good People* (Artists' Ensemble Theatre), *Arsenic and Old Lace* (Evansville Civic Theatre), *The Toxic Avenger* (ThinkPink Productions), *9 to 5* (San Diego Musical Theatre), and *Picnic* (Oceanside Theatre Company) She wants to thank her husband for his continuing support of her throughout this journey together -- love you more! www.cjmartinlighting.com

MATT LESCAULT-WOOD (Sound Designer) is excited to be back at Diversionary. Previous credits include: *The Moors*, *Lizard Boy* (Diversionary); *Sweeney Todd*, *Cabaret*, *Little Shop of Horrors*, *A Behanding In Spokane*, *Man of La Mancha*, *Assassins*, *Company*, *Spring Awakening*, *Pageant*, *True West*, *Fool For Love*, *Sons of the Prophet*, *My Fair Lady*, *Shockheaded Peter* (Cygnet); *Evita*, *Roz and Ray*, *Hand To*

THE COMPANY

God (San Diego REP); *Eurydice* [2010 San Diego Critics Circle Nominee], *Dead Man's Cell Phone*, *Hickorydickory*, *ENRON*, *Eternally Bad*, *The Kid Thing* (Moxie); *Hamlet*, *Macbeth*, *I Hate Hamlet*, *Woody Guthrie's American Song* (Intrepid); *Seascape*, *Stage Kiss*, *Lord of The Flies*, *Big River* (New Village Arts); *Henry V* [2014 San Diego Critics Circle Nominee] (New Fortune); *MixTape* [2015] (Lambs). Matt has a Degree in Theatrical Design and Technology from SDSU.

BONNIE DURBEN (Properties Designer) Diversionary Theatre: *The Happiest Place on Earth*, *Cardboard Piano*, *The Moors*, *2.5 Minute Ride*, *Well*, *Ballast*, *Mystery of Love and Sex*, *The Boy Who Danced on Air*, *Now or Later*, *She-Ranculas*, *Baby With The Bathwater*, *A New Brain* and *Amazons and Their Men*. Moonlight Theatre Productions: *Aida*, *Little Mermaid*, *Sunset Blvd*, *In The Heights*, *Sister Act*, *Peter Pan*, *Titanic*, *Addams Family*, *Music Man*, *Shrek*, *All Shook Up* and *Big Fish*. Scripps Ranch: *Skin Deep*, *Good People*. Mira Costa Theatre: *Waiting For Lefty*, *Oklahoma*, *These Shining Lights*, *Romeo and Juliet*, *Seven*, *Vanya and Sonia and Masha and Spike*, *Urinetown*. Cygnet Theatre: *Animal Crackers*, *On The Twentieth Century* and 57 other productions. Bonnie is a member of the Society of Property Artisans and Managers.

PETER HERMAN (Wig Designer) has designed wigs and costumes for over thirty shows at Diversionary, some highlights include: *The Rocky Horror Show*, *Scrooge With Rouge*, *The Mystery of Irma Vep*, *The Further Adventures of Hedda Gabler*. Peter has designed wigs all over the Southern California area. Some of his work has been seen at Cygnet Theater, The La Jolla Playhouse, The San Diego REP, Moonlight Stage Productions, North Coast REP, as well as some design work for film, television, and various theme parks. Peter currently teaches wig and makeup design at San Diego State University.

ISAAC FOWLER (Assistant Stage Manager) is immensely grateful for the opportunity to make his debut with Diversionary working on *The Loneliest Girl in the World*. Previous Selected Credits: *The North Plan*; Director (ion theatre), *Cabaret*; Assistant Director/ASM (ion theatre), *The Ballad of Emmett Till*; Production Coordinator (ion theatre), *The Normal Heart*; Assistant Director (ion theatre), *Airline Highway*; Stage Manager (ion theatre). *Lydia*; Assistant Director/ASM (ion theatre). He can also be found working in various scene shops around town. All my gratitude to Rachael.

Special Thank You to THE QUEEN BEES

Di Carpinelli, Anna Curren, Howard Finnecey, Carol Ann Flanagan, Dan Haslam, Joan Loomis, Lindy & Rick Miles, Deborah Pantoni, Pat Shank, and Julie Ustin



MATT M. MORROW (Executive Artistic Director) Since joining Diversionary, Matt has directed the World Premiere of Georgette Kelly's *Ballast* (Best New Play, 2017 San Diego Critics Circle Awards), the San Diego Premiere of Bash Doran's *The Mystery of Love and Sex*, and the West Coast Premieres of Jordan Seavey's *Homos, Or Everyone in America*, Jordan Harrison's *Amazons and Their Men* and Christopher Shinn's *Now Or Later*. Most recently, Matt directed Caryl Churchill's *Cloud Nine* with The Globe/USD MFA Acting program. Prior to joining Diversionary, Matt was the Associate Artistic Director of City Theatre Company, a LORT theatre in Pittsburgh. With City he directed the Regional Premiere of Jessica Dickey's *Charles Ives Take Me Home*, the World Premiere of Tami Dixon's *South Side Stories* (Pittsburgh Post Gazette & Tribune Review's Top Ten of 2012), Kim Rosenstock's *Tigers Be Still*.

He has developed new work with The Globe, The Sundance Theatre Institute, The Banff Centre, American Conservatory Theater, Lincoln Center, PlayPenn, and Page 73 Productions at the Yale School of Drama. His work as a director has been seen in NYC at Amas, Playwrights Horizons, Urban Stages, EST, HERE, Dixon Place, Cherry Lane, The York, The Tank, NYC Int'l Fringe, Midtown Int'l Festival, among others. His production of Jennifer Haley's *Neighborhood 3: Requisition of Doom* with Bricolage Production Company was cited in the Top Ten of 2010 by The Pittsburgh Tribune Review.

Matt is currently a San Diego Foundation Creative Catalyst Fellow, and is developing Jennifer Haley's *FROGGY*. He served as The John Wells Professor of Directing at Carnegie Mellon University's School of Drama (Graduate & Undergraduate Directing programs), and is a member of the Lincoln Center Director's Lab. He holds a BFA in Directing from Carnegie Mellon University. www.mattmmorrow.com

JENNY CASE (Managing Director) Jenny has 16 years' experience in working for non-profit theatre in San Diego, including the last 10 years as the Associate General Manager of La Jolla Playhouse. She also served as the Producer of the *Without Walls (WOW) Festival* and one of the producers of the wildly successful *Accomplice: San Diego*, which was performed in Little Italy in 2013. She also line produced many of the Playhouse's New York developmental workshops including *Escape to Margaritaville*, *Hands on a Hardbody*, *Bonnie and Clyde*, *Little Miss Sunshine* and many others.



BOARD OF TRUSTEES

- Scott Williford President
- Jodie Graber Vice President
- Jerry Hicks Treasurer
- Dr. Chris Wixom Secretary
- Tom Abbas Trustee
- Brian Corrigan Trustee
- Jay Henslee Trustee
- Roxanne Govari Trustee
- Rob Granat Trustee
- Colleen Kendall Trustee
- Kathleen Kuttler Trustee
- Darrell Netherton Trustee
- Todd Nelms Trustee
- Rosina Reynolds Artistic Trustee
- Allison Rossett Trustee
- Shana Wride Artistic Trustee

HONORARY BOARD

Susan Atkins-Weathers, Larry Baza, Jonathan Dunn-Rankin*, Stanley Lewis, Andrea Villa *In Memoriam

STAFF

- Matt M. Morrow Executive Artistic Director
- Jenny Case Managing Director
- David R. Shorey Development Associate
- Sebastian Perfetto Production Manager
- Anthony Methvin Artistic Associate
- Skyler Sullivan Education Associate
- Liz Brave Business Associate
- Derrol Murphy Concessions Manager
- Sarah Lujan, Ken Sargosa & Suguna Sridhar Bar & Box Office Associates
- Stu Schwartz Usher Coordinator
- The Computer Admin IT Consultant
- Simpatika Photography & Graphic Design
- Ami Ipapo-Glass Graphic Artist
- Nicole Cantalupo Teaching Artist
- Joey Kirkpatrick Intern
- Jenna Pekny Intern

GUEST & SUPER STAR VOLUNTEERS

Rhea Engler, Hafsa Fathima, Kent Swedell,
Living Independently and San Diego's awesome Usher Corps.