


WHEN THE CHIPS ARE DOWN AND THE COUNTRY IS UNDER ATTACK  
**YOU'D BETTER HAVE A PLAN**  
A raucous and riotous new comedy

BOLD. UNCOMPROMISING. THEATER.



# THE NORTH *Plan*

AUG 19 - SEPT 9



by Jason Wells

directed by Isaac Fowler

FEATURING: TINA BROWN, SAMANTHA GINN, FRED HUNTING, DON LOPEZ, JAKE ROSKO & DAREN SCOTT  
SCENIC DESIGN JONATHAN GILMER PRODUCTION COORDINATOR YOLANDA FRANKLIN PROPERTIES DESIGN ABBIE HOWARD  
SOUND DESIGN ROBERTO QUIÑONES COSTUME DESIGN MARY SUMMERDAY LIGHTING DESIGN MICHELLE YANG XIAO  
STAGE MANAGER KEVIN KORNBERGER PRODUCER CLAUDIO RAYGOZA

PHOTOS BY DAREN SCOTT

WWW.IONTHEATRE.COM | (619) 600-5020 | HILLCREST



Claudio Raygoza<sup>+</sup>  
Founder/Executive Artistic Director

Glenn Paris<sup>+</sup>  
Founding Producing Artistic Director

Kim Strassburger<sup>+</sup>  
Associate Artistic Director

Season Sponsors  
**Pamela S. Wagner & Hans Tegebo**

ion theatre proudly presents on the Elaine Lipinsky Stage the San Diego Premiere of:

# THE NORTH PLAN

by Jason Wells  
directed by Isaac Fowler<sup>+</sup>

CAST : : in alphabetical order

Tina Machele Brown	::	Shonda Cox
Samantha Ginn	::	Tanya Shepke
Fred Hunting	::	Bob Lee
Don Loper	::	Chief Swenson
Jake Rosko	::	Dale Pittman
Daren Scott	::	Carlton Berg

Setting: Lodus, Missouri. Today? Yesterday? Tomorrow...?

Running time: 90 mins. There will be one ten-minute intermission. There is the use of theatrical gun shot effects used in this production.

Producer  
**Claudio Raygoza<sup>+</sup>**

Stage Manager  
**Kevin Kornburger<sup>+</sup>**

Scenic Designer  
**Jonathan Gilmer**

Fight Choreographer  
**Rhys Greene**

Properties Designer/Costume Asst.  
**Abbie Howard**

Sound Designer/Asst. Director  
**Roberto Quiñones**

Costume Designer  
**Mary Summerday<sup>+</sup>**

Lighting Designer  
**Michelle Yang Xiao**

Production Coordinator  
**Yolanda Franklin<sup>+</sup>**

Volunteer Coordinator  
**Trina Kaplan<sup>+</sup>**

Usher Coordinator  
**Julie Ustin**

Construction Team  
**Lon Bevers**

**Isaac Fowler<sup>+</sup>**

**Rachael Fowler**

**Yolanda Franklin<sup>+</sup>**

**Jonathan Gilmer**

**Abbie Howard**

**Kevin Kornburger<sup>+</sup>**

**Roberto Quiñones**

## Season and Corporate Partners

Lon & Denise Bevers \* Bill & Judy Garrett

The Patio on Goldfinch/Gina Champion-Cain, Proprietor

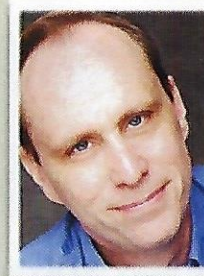
::: ion theatre company Board of Directors :::

Karen Quiñones, Chair

Lynn Basquez, Carol Ann Flanagan, Clark Mires & Julie Ustin

Immediate past Chair: Gail S. Ebner ::: Chair Emerita: Denise Bevers & Elaine Lipinsky

# PLAYWRIGHT



**Jason Wells**

Jason Wells's first play, *Men of Tortuga*, debuted at Steppenwolf Theatre's First Look Repertory of New Work and had its official premiere at the Asolo Repertory Theatre in Sarasota. Jason's second play, *Perfect Mendacity*, was a commission from Manhattan Theatre Club and the Sloan Foundation. Like *Men of Tortuga*, it debuted at Steppenwolf and went on to the Asolo. It was a finalist for the American Theatre Critics Association's Steinberg/New Play Award, and won the ATCA M. Elizabeth Osborn Award. *The North Plan* debuted at First Look, and went on to Portland Center Stage in Portland, Oregon. All three plays have been published through Samuel French, Inc. Jason's newest play, *The Engine Of Our Ruin*, debuted at Victory Theatre Center in Burbank, California and was nominated for an LA STAGE Alliance Award and an LA Drama Critics Circle Award. Jason lives in Chicago. Jason is also an actor with numerous TV, film, and stage credits.



The World Premiere of THE NORTH PLAN was produced by Portland Center Stage, Portland, Oregon (Chris Coleman, Artistic Director)

THE NORTH PLAN was developed by Steppenwolf Theatre Company, through its New Plays Initiative and was presented as part of its First Look Repertory of New Work at Steppenwolf Theatre Company, Chicago, Illinois; (Martha Lavey, Artistic Director; David Hawkanson, Executive Director)

The play was subsequently workshopped at JAW:A Playwrights Festival, produced by Portland Center Stage.

## Thank you.

This production would not have been possible without the help of many people including a tireless cast and crew. Thank you to:  
Lon & Denise Bevers, Rhys Greene, Mr. Greene's Coffee, Alex Barrera, The Patio on Goldfinch, Gina Champion-Cain, Bonnie Durben, Rachael Fowler, The La Jolla Playhouse, Karen Quiñones and ion's Board and the ion Luminaries: Julie Ustin, Deborah Pantoni, Howard Finnecy & Carol Ann Flanagan!



# CAST & PRODUCTION



**TINA MACHELE BROWN**

:: Shonda ::

ion: **Debut.** Tina is happy to be part of this talented cast. Recent: *Blacktop Sky* (Ira Aldridge Repertory Theatre); *That24Thing* at the Fringe Festival.

Favorite past productions: *Look Listen* (Milwaukee Repertory Theater); *The Gingham Dog* (Cornerstone Theater). Ms. Brown began performing in church in Milwaukee, Wisconsin where she was born and raised. Tina has taught 15+ years and believes in working with students to use theatre to teach life skills and heal the community-at-large; her passion is in the arts and she truly enjoys what she does. Her motto is "Enjoy Life's Journey."

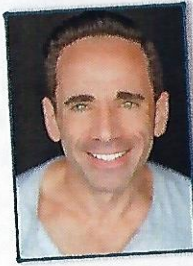


**SAMANTHA GINN**

:: Tanya ::

ion: **Far Away, Edgar & Annabel.** Other credits: *The Revolutionists*, *Hickorydickory* (Critics Circle Award), *Trouble in Mind* (Moxie

Theatre); *Sylvia*, *The Weir*, *The Miss Firecracker Contest* (New Village Arts), *Well*, *Scrooge in Rouge* (Diversions Theatre), *She-Rantulas From Outer Space in 3D!* (New York Fringe Festival), *The Car Plays* (La Jolla Playhouse), *When It Comes* (The Old Globe Creative Catalyst); *Seminar*, *Dog Sees God* (InnerMission Productions) and *The Warrior's Duet* (Circle Circle dot dot). Samantha graduated from Sonoma State University with a Bachelor's Degree in Theatre Arts and is also a local writer, director, and improv teacher.

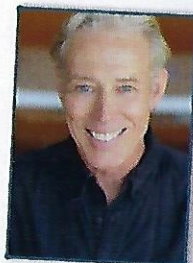


**FRED HUNTING**

:: Bob ::

ion: **The Normal Heart.** Fred is excited to be back at ion and grateful to be working with this amazing cast and crew; major thanks to Director Isaac Fowler &

Producer Claudio Raygoza for including me on this team! Credits include: *Double Dose of Twilight Zone* (OnStage); *Braverman Chronicles* (Matrix Theatre); *Lonely Impulse of Delight* (Tiffany Theater). TV credits: guest supporting role *Suddenly Susan* (NBC); four seasons as host of local talk show *Center Street* (KSL-TV, Salt Lake City, UT). Fred had the lead role and was co-writer of the independent film: *Pure Race* (Cornerstone Films) and played the lead in *Quest for a Go-Getter* (Mountain Pictures).



**DON LOPER**

:: Swenson ::

ion: **Debut.** Favorite credits include: *A Christmas Carol*, *Wings* (San Diego Rep); *1776*, *Detective Story* (Lamb's Players); *Wet* (Moxie Theatre); *Travesties/Importance...Earnest*, *Arcadia*, *Laughter on 23rd Floor*, *The Adjustment*, *M Butterfly*, *Rough Crossing*, *Dancing at Lughnasa*, *Mastergate* and *Chekhov in Yalta* (North Coast Rep). Most recently: *Home Is Where The Light Is* and *Medea* (Proud Mouse) and *Waiting For Godot* (Fruitless Moon).

# CAST & PRODUCTION

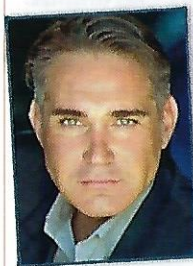


**JAKE ROSKO**

:: Pittman ::

ion: **The Jacksonian, Far Away, Edgar & Annabel, The Elaborate Entrance of Chad Deity, In the Heat of the Night, Bengal Tiger at the**

**Baghdad Zoo.** Jake is happy to return to the ion stage. His most recent productions elsewhere include: *The Playwright's Project* at the Old Globe and *Loves and Hours* at Scripps Ranch Theatre. Jake is a San Diego native and graduated from SDSU with a bachelors degree in English.



**DAREN SCOTT**

:: Carlton ::

ion: **The Normal Heart.** Most recently seen in *The Normal Heart* at ion and playing Marc in Intrepid Theatre's production of ART. As a founding ensemble

member of New Village Arts, he has worked almost exclusively there, acting, directing, assistant directing for well over a decade. Other local theatres he has worked as an actor include Cygnet, Diversions (one being *Divine Sister* directed by none other than Glenn Paris), Renaissance Theatre, Backyard Productions, and Vantage. He works as a theatre photographer doing both marketing and or production photos for many theatres around town. His "day" job is casting associate for D. Candis Paule CSA at Candis Casting, where they recently worked on season one of Fox TV show, *Pitch*.

**ISAAC FOWLER<sup>†</sup>**

:: Director ::

ion: **The Ballad of Emmett Till, The Normal Heart, Airline Highway, Lydia, Jesus Hates Me.** Isaac is grateful to be back for another show with ion. Previous shows include: *The Ballad of Emmett Till* (Production Coordinator), *Jesus Hates Me* (Production Assistant), *Lydia* (Assistant Director), *Airline Highway* (Stage Manager) and *The Normal Heart* (Assistant Director). Special thanks from the bottom of my heart to Rachael Fowler whom I would surely be homeless and starving without. **The North Plan** is his directorial debut.

**YOLANDA FRANKLIN<sup>†</sup>**

:: Production Coordinator ::

ion: **The Ballad of Emmett Till, Sea of Souls, Ryes, 'night Mother, This Wide Night** (Noel Nom.), **Chicago, The Little Flower of East Orange** (Noel Nom.). NVA: *To Kill a Mockingbird*, *The Trip to Bountiful*; Lamb's: *The Miracle Worker*; Diversions: *The Divine Sister*, *Further Adventures of Hedda Gabler* (Noel Award); OnStage: *The Sugar Witch* (Noel Nom.); Moxie Theatre: *Our Lady of Kibeho*, *A Raisin in the Sun* (Noel Nom.), *Dead Man's Cell Phone*, *Gibson Girl*; Cygnet: *Our Town*; CGT: *Handel's Messiah*, *Four Queens No Trump*.

**JONATHAN GILMER**

:: Scenic Designer ::

ion: **Debut.** Jonathan is a multidisciplinary production designer whose work is based in both drama and opera. He is a graduate of London's Guildhall School of Music & Drama, where he received his Bachelor of Arts degree in Technical Theatre Arts.



# CAST & PRODUCTION

Jonathan was part of the student design team for the U.K. student exhibit at the Prague Quadrennial for Performance Design in 2015. In 2016, Jonathan completed his professional secondment with Opera Australia supporting various productions in the Sydney Opera House and on their outdoor production of *Turandot*. Jonathan designed Shostakovich day in collaboration with Gerard McBurney and the Barbican Centre in London. Most recently, Jonathan worked as a technical designer for the La Jolla Playhouse's production of *Escape to Margaritaville* (Christopher Ashley).

## ABBIE HOWARD

:: Properties/Costume Assistant ::

ion Director: **Debut**. Abbie is thrilled to be working on her first professional show. She graduated this spring with a degree in technical theatre from Grossmont College and is excited to work on provocative and exciting shows in the future.

## KEVIN KORBURGER<sup>†</sup>

:: Stage Manager ::

ion: **The Ballad of Emmett Till, The Normal Heart, 4000 Miles, Lydia, Jesus Hates Me**. He has stage managed with ion for most of Season 11 and will for Season 12: **REVOLUTION**, and otherwise most recently for *Having Our Say, Emilie* (New Village Arts), *Hope, I Ought to Be in Pictures* (Talent to aMuse), and *The Trip to Bountiful* (New Village Arts); He heartfully thanks Claudio, Glenn, and the cast and crew for creating this opportunity for magic.

## GLENN PARIS<sup>†</sup>

:: Producing Artistic Director ::

ion: **The Normal Heart, Airline Highway, The Chairs, Mud, The Little**

**Flower of East Orange**. Also: **Founding Producing Artistic Director** of ion theatre, he has worked on dozens of productions including: **4000 Miles, Sunday in the Park with George** (Noel Award), **Lydia, Jesus Hates Me, The Jacksonian, The Aliens, Sea of Souls** (New York & San Diego), **'night Mother** (Noel Nominee), **Shining City** (Noel Nominee), **Punk Rock, The Little Flower of East Orange, Request Programme, Hurlyburly** (Noel Nominee/ Noel Award, Ensemble), **Punks** (Patté/Ensemble). Also in San Diego: *The Divine Sister, The Pride* (Diversions Theatre) *Adam Baum* (6th @ Penn). Upon taking his MFA at Carnegie Mellon, the great actor and teacher, Uta Hagen, invited him to be the first artistic director of HB Playwrights Foundation in New York, succeeding founder Herbert Berghof. There he worked with Saul Bellow, Pamela Blair and Donna McKechnie (of the original cast of *A Chorus Line*), Horton Foote, Christine Lahti, Jack Lemmon, Charles Nelson Reilly, and Fritz Weaver among others. Mr. Paris created *Recovering the Dark*, staged at *The Kitchen* ('a leading incubator of new work in New York') and produced by his company **Native Coast** which also produced *Two Women Write* (for the theatre) at Tribeca Film Center and *Second Coming* by John Petrick at Bank Street Theatre. *Off-Broadway*: writer, director, for *Sea of Souls*. Mr. Paris was named **Producer of the Year 2010** (with Claudio Raygoza) by the San Diego Critics Circle for a year of Outstanding Productions and ion's production of *Angels in America* earned the Circle's inaugural Braunagel Award for **Outstanding Work at a Small Theater** in 2011 and he once again earned the Braunagel Award for ion's theatrical **Body of Work** in 2013.

# CAST & PRODUCTION

## CLAUDIO RAYGOZA<sup>†</sup>

:: Producer ::

**Founder/Executive Artistic Director**. He has directed, acted, designed, written and/or produced all 95+ productions for ion. Also, with Glenn Paris, he founded ion's **Actor Academy** in 2014 which has seen several graduates win multiple local, national and international awards and scholarships. *Other local work*: New Village Arts; La Jolla Playhouse; *Diversions*; San Diego REP; *Cygnets*; *Lynx Theatre*; *Intrepid Theatre*; *6th@Penn*; *MOXIE*; *Mo'olelo*; *Sledgehammer*; *UCSD*; *USD*. *Regional*: *UCLA*, *Moving Arts*; *MYE Theatre*; *Los Angeles Theatre Center*; *AADA*; *Borderlands Theatre*; *Arizona Theatre Company*; Several acting/directing in Paris, France. *Off-Broadway*: producer, writer, director, designer for *Sea of Souls* at the Peter J. Sharp (Playwrights Horizons). Mr. Raygoza has been recognized with multiple awards and nominations for his work as a director, playwright, actor, and theatre producer and was named **Producer of the Year 2010** (with Glenn Paris) by the San Diego Critics Circle for an entire year of **Outstanding Productions** while ion's 20th Anniversary revival of *Angels in America* Parts I & II, sanctioned by Tony Kushner, earned the Circle's inaugural Braunagel Award for **Outstanding Work at a Small Theater** in 2011. ion once again earned the Braunagel Award for its theatrical **Body of Work** in 2013. Training: *UCLA School of Theatre, Film & Television*.

## MARY SUMMERDAY<sup>†</sup>

:: Costume Designer ::

ion: **The Ballad of Emmett Till, The Normal Heart, 4000 Miles, Lydia, Jesus Hates Me, The Jacksonian,**

**Master Class, Sea of Souls** (San Diego and New York productions) **This Wide Night, GEEKS! The Musical, Edgar and Annabel, Far Away, Bug, reasons to be pretty, The Elaborate Entrance of Chad Deity, Ass or A Midsummer Night's Fever, In the Heat of the Night, The Little Flower of East Orange**. Mary is a veteran costume designer who graduated with a BFA from the University of California, San Diego, she initially pursued acting through the La Jolla Playhouse Student Conservatory and British Academy of the Dramatic Arts Midsummer at Oxford Program, until she discovered theatrical design. She is passionate about telling stories through costume, whether via flowery period, stark modern or gritty futuristic. Mary's tenure at ion has included many unique design opportunities, from disco divas and pro wrestlers to psychotic addicts and grungy ex-cons, and much more. ion workshop productions for *Sea of Souls*, *Ryes*, *Six*, and *Grove*; Other credits include New Village Arts' *One Flew Over the Cuckoo's Nest*, and UCSD Theatre Department's *Marriage, Medicine, Money, and Mayhem* and *reasons to be pretty*.

## MICHELLE YANG XIAO

:: Lighting Designer ::

ion: **Debut**. ); UCSD Theatre and Economics double major student. Theatre credits: *Waiting for Godot* (ALD), *Are You There?* (UCSD Theatre Productions); *Romeo and Juliet* (Shakespeare Festival in Wuhan, China). Upcoming Production: *She Kills Monsters* (UCSD Theatre Production)

<sup>†</sup>member ion theatre