

Scenic Design
MIKE BUCKLEY ●

Lighting Design
NATHAN PEIRSON ■

Costume Design
JEANNE REITH ●

Sound Design
DEBORAH GILMOUR SMYTH ■ ▲

Properties Design
RACHEL HENGST ■

Projection Design
MICHAEL MCKEON ●

Stage Manager
RYAN JAMES HEATH ▲

PRODUCTION STAFF

Director of Production

Nathan Peirson

Shop Foreman **Josh Longfellow**

Technicians **Steven Longfellow**

Hunter Hall

Master Electrician **Michelle Miles**

Audio Engineer **Patrick Duffy**

Costume Crew

Shop Foreman/Pattern Maker **Jemima Dutra**

Pattern Maker **Juliet Czoka**

Head Stitcher **JoClare Longfellow**

Crafts/Wardrobe **Virginia Longfellow**

Stitchers **Jenivie Bernbeck,**

Erin Valerie Mudd

Patron Services Director

& Horton Grand Usher Coordinator

Deborah Gilmour Smyth

Box Office Manager

Caitie Grady

Coronado Usher Coordinator

Cynthia Gerber

April 29 - May 29, 2016

Dinner with Marlene

written by **Anne-Charlotte Hanes Harvey**

directed by **Robert Smyth** ■

SETTING

Paris

October, 1938

The restaurant "Tout Paris"

ENSEMBLE

Eric Hanes Brian Mackey ● ▲

Barbara Hutton Rachael VanWormer ●

Fritz Kreisler John Rosen ●

Erich Maria Remarque Jason Heil ● ▲

Bernadine Boubiel Cynthia Gerber ●

Leonore Wolff Kerry Meads ■ ▲

Maria Sieber Avery Trimm ●

Marlene Dietrich Deborah Gilmour Smyth ■ ▲

Waiter Patrick Duffy ■

INTERMISSION

There is a fifteen minute intermission with refreshments
available in the lobby or in Encore Café

Special thanks to Jim Chovick, Cris O'Bryon,
Ernest Saucedo, Kara Tuckfield

■ Lamb's Players Staff Member ▲ Appearing courtesy of Actor's Equity Association ● Associate Artist

© April 2016 • Lamb's Players Theatre, P.O. Box 182229, Coronado, CA 92178
lambplayers.org • 619.437.6000

PROFILES



**Patrick Duffy
Waiter**

Patrick was last seen as Bernado in *West Side Story* here, and his other favorite roles have been MacDuff in *Macbeth* at Intrepid, and Hyde in *Dr. Jekyll and Mr. Hyde* at Ion. Other stage credits here at Lamb's include *Pete N Keely*, *The Book of the Dun Cow*, *Smoke on the Mountain '04 & '10*, *Festival of Christmas '08*, *The Voyage Inheritance*, *An Ideal Husband*, *Cold Comfort Farm*, *South Pacific*, and *Rehearsal for Murder* (which he also stage managed and sound designed). He recently won the Craig Noel "Outstanding Sound Design" award for *Les Misérables*, and his other sound credits here are *MIXTAPE*, *Fiddler on the Roof*, *Pump Boys & Dinettes*, *Godspell*, *Boomers*, *The Fantasticks*, *The Light in the Piazza*, *Joseph '07 and '15*, *American Rhythm '06* at the Lyceum, *The Secret Garden*, and *Enchanted April*. When not on stage or designing, he can be found building sets or as Lamb's Audio Master. Patrick is thankful for all His blessings in his life, and wishes you the same. Thanks for coming by, enjoy!



**Cynthia Gerber
Bernadine Boubiel**

was a member of LPT's Resident Ensemble from 1988 to 2001 and is now an Associate Artist. She was recently seen in *The Miracle Worker*, *The Nerd*, *An American Christmas* and *You Can't Take It With You*. Prior to that you saw her in *Twelfth Night*, *Quilters*, *Wit* and Lamb's annual *Festival of Christmas*. Favorite productions at LPT include *Harvey*, *The Hit*, *Susan and God*, *The Miracle Worker*, *Flight*, *Steel Magnolias*, *Quilters*, *Busman's Honeymoon*, *Detective Story*, *See How They Run*, *Amadeus*, *Dracula*, *To Kill A Mockingbird*, and *Ring Round The Moon*. Cynthia studied at The American Academy of Dramatic Arts. She is also enjoying her role as Cannon and Spencer's mom.



**Deborah Gilmour Smyth
Marlene Dietrich / Sound Designer**

Associate Artistic Director and director of Patron Services, Deborah has been a member of the Lamb's resident ensemble since 1979. Originally from the East Coast, she has lived all over the United States and went to school at San Francisco State University where she

studied music and theatre. One of San Diego's most active performers with over 200 productions to her credit, she is a six-time recipient of the San Diego Theatre Critics' Circle's Craig Noel Award including Outstanding Lead Performance in a Play for Lamb's 2013 production of *Wit* and Outstanding Female Performance in a Musical for her performance as Mother in *Ragtime* at Starlight Musical Theatre, for her role of Margaret Johnson in *The Light in the Piazza* at Lamb's Players, and for her role of Mrs. Lovett at Cygnet Theatre. She has been honored with Backstage West and numerous Patte awards for performance, original music, sound design. At Lamb's Players Deborah has performed in over 160 productions, directed over 70 productions, sound designed, written original music, or musically directed over 80 productions. Deborah enjoys the opportunity to be involved in an amazing ensemble that is the Lamb's Players family. Deborah and her husband, Producing Artistic Director Robert Smyth, make their home in Coronado.



**Jason Heil
Erich Maria Remarque**

LPT Associate Artist: *The Miracle Worker*, *Fiddler On The Roof*, *Wit*, *See How They Run*, *Joe vs. the Volcano*, *The Glory Man*, *Harvey*, *Joyful Noise*, *The Glass Menagerie*, *Room Service*, *The Voyage Inheritance*, *An American Christmas ('07,'08,'09,'15)*, *Enchanted April*, *Into the Woods*, and *The Winslow Boy*. Other San Diego credits include *Twelfth Night*, *Plaid Tidings* (Old Globe), *Lucy Simon's Zhivago* (La Jolla Playhouse), *Sea of Souls*, *Passion*, *Angels in America* (ion theatre company), *Violet*, *Clybourne Park*, *A Christmas Carol* (San Diego Rep), *Cabaret*, *Noises Off* (Cygnet), *School for Lies*, *Dracula* (North Coast Rep) and work at Moonlight, Starlight, Compass. Off-Broadway: *Sea of Souls*. Regional theatres include Arkansas & Tennessee Repertory Theatres and nine seasons with the Utah, Lake Tahoe, Marin, and Texas Shakespeare Festivals. Directing: *Turn of the Screw* (Intrepid), *Lion In Winter*, *Born Yesterday*, *The Mousetrap*, *Barefoot in the Park*, *Ring Round the Moon*, *You Never Can Tell* (Moonlight), *Plaid Tidings* (New Village Arts). MFA: UC Irvine.



**Brian Mackey
Eric Hanes**

Brian was last seen at Lamb's in *The Nerd*, as well as *An American Christmas* and *Twelfth Night*. Elsewhere: *The Importance of Being Earnest*, *Travesties*, *The Glass Menagerie*, *History Boys*, *Christmas Carol* (Cygnet - Resident Artist); *All My Sons*, *Hamlet*, *A Midsummer Night's Dream: The Musical*, *An Enemy of the People* (Intrepid Theatre); *In the Heat of the Night*, *The Woolgatherer*, *Bash: Latter-Day Plays*, *Jack Goes Boating*, *All in the Timing*, *A Streetcar Named Desire*, *The Grapes of Wrath* (ion theatre); *In the Next Room or The Vibrator Play* (San Diego Rep); *The Pride*, *The Little Dog Laughed*, *Baby with the Bathwater*, *As Much As You Can*, *Corpus Christi* (Diversionary - Associate Artist); *A Christmas Carol ('07,'08,'09)*, *Little Women* (North Coast Rep); *Born Yesterday* (AVO Playhouse); *Night Sky* (Mo'olelo); *The Heidi Chronicles*, *Julius Caesar* (New Village Arts); *Side Man* (BANG!). Brian was awarded the 2011 Craig Noel Award for Actor of the Year.



**Kerry Meads
Leonore Wolff**

Kerry wears many hats as actor, director, and playwright. She is the director of Lamb's Educational Outreach. On staff at Lamb's since 1976, she now serves as Lamb's Associate Artistic Director. As resident playwright, her work includes *Boomers*, *American Rhythm*, *Dracula*, *My Asparagus Is Growing Fine* and LPT's annual *Festival of Christmas*. Her directing credits include *MIXTAPE*, *Guys & Dolls*, *Trying*, *An Ideal Husband*, *Pretty Fire*, *Thunder At Dawn*, *Private Lives*, *The Boys Next Door*, *Amadeus*, *Beau Jest*, *The Foreigner* and *You Can't Take It With You*. As a performer she has been seen in such productions as *The Great Divorce*; *Quilters*; *Tartuffe*; *Godspell*; *She Loves Me*; *A Woman of No Importance*; *You're A Good Man, Charlie Brown*; *Till We Have Faces*; *Pump Boys and Dinettes*; *Into The Woods*; *Hello, Dolly!*; *Boomers*, *The Hit*, *Leaving Iowa*, *Harvey*, *The Music Man* and *See How They Run*.



**John Rosen
Fritz Kreisler**

John is happy to be back performing at Lamb's Players in this fine production! Lamb's: *The Nerd*, *Festival of Christmas 2015*, *OZ*, *West Side Story*, *You Can't Take It With You*, *Fiddler on the Roof*, *Around the World in*

80 Days, *Joe vs the Volcano*, *Guys & Dolls*, *The Music Man*, *Harvey*, *The Fantasticks*, *Room Service*, *The Winslow Boy*, *American Rhythm* and *Charley's Aunt*. REGIONAL: *A Catered Affair* and *The Constant Wife* for The Old Globe. LOCAL: *Old Jews Telling Jokes*, *Ella*, and *A Funny Thing Happened on the Way to the Forum* for San Diego Rep; *Musical Comedy Murders of 1940* and *To Forgive Divine* for North Coast Rep; *Bunbury*, *The Long Christmas Ride Home*, and *Looking for Normal* for Diversionary; and other shows in the too distant past for Sledgehammer, Bowery, and Gaslamp Quarter Theatres.



**Avery Trimm
Maria Elisabeth Sieber**

Avery is delighted to be back at LPT as a part of this original production. You last saw Avery in the ongoing tradition of *Festival of Christmas* as Ellie in *Catch a Falling Star*. She attends middle school in Escondido and enjoys horseback riding, dance, modeling, hanging with friends and being challenged in class. Favorite credits include: Wendy Darling in *Peter Pan* (BBTA) for which she won the National Youth Theater Award- Lead Actress, Ellie in *To Catch a Falling Star*, Posey in *Christmas on my Mind*, (Lamb's Players, *Festival of Christmas*), Young Terk in *Tarzan & Ginger in Zombie Prom* (Center Stage Productions). Many thanks to this amazing artistic team, the great cast, her family, friends and instructors for supporting her dream of performing.



**Rachael VanWormer
Barbara Hutton**

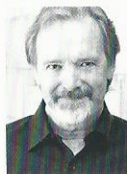
Lamb's Players Theatre: *An American Christmas*; Cygnet Theatre: *When the Rain Stops Falling*, *The Vortex*, *Hay Fever*, *The Importance of Being Earnest*, *Travesties*, *Arcadia*, *The Matchmaker*, *The Little Foxes*, *Curse of the Starving Class*; Playhouse Productions: *Love, Loss and What I Wore*; San Diego Rep: *boom*; New Fortune: *Henry V*; North Coast Rep: *Faded Glory*, *A Christmas Carol*; Diversionary Theatre: *Regrets Only*, *Birds of a Feather*, *Speech & Debate*, *Corpus Christi*, *Beautiful Thing*; PCPA TheaterFest: *The Wizard of Oz*, *Lifeboat*, *The Reluctant Dragon*; ion Theatre: *Reason to be Pretty*, *In the Heat of the Night*, *The Woolgatherer*, *bash: latterday plays* (Critics Circle Award), *Dr. Jekyll and Mr. Hyde*, *In a Dark Dark House*; Moonlight Stage Productions: *The Mousetrap*, *You Never Can Tell*; New Village Arts: *Waving Goodbye*, *Things We Want*, *Time Flies*, *Be Aggressive*, *This Is Our Youth*, *The Playboy of the Western World*, *The Two Gentlemen of Verona*; Moxie Theatre: *Eleemosynary*, *The Sugar Syndrome*, *The Listener*.



Anne-Charlotte Hanes Harvey
Playwright/Dramaturge

Born in Sweden, educated in Sweden and the U.S.; Professor Emerita, School of Theatre, Television and Film, San Diego State University. After years as a theatre educator and practitioner,

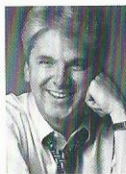
specializing in translating and dramaturging the plays of Ibsen and Strindberg for productions ranging from academic theatre to South Coast Rep in Costa Mesa to Broadway, Anne-Charlotte is now also writing plays: *Fade to White* (about the Swedish polar explorer S. A. Andrée), presented 2009 at the Polar Center in Gränna, Sweden; *Dinner With Marlene* (based on her father's dinner with Marlene Dietrich in Paris 1938); *Hidden* (a Jewish girl is rescued from the Nazis by Belgian nuns); *Mrs. L* (Mary Todd Lincoln's last hour in the White House; and *Terror Incognita* (the Australasian Antarctic expedition 1911-14). She is currently at work on *Soft Balls*, a tribute to senior softball in California today.



Robert Smyth
Director

is LAMB's Producing Artistic Director. He joined the staff of Lamb's Players Street Theatre as an actor and director in 1976. In 1978 LAMB's opened its first resident theatre in National City,

and then in 1994 brought the old performance space in Coronado's historic Spreckel's Building back to life as its new home. Robert has directed more than 150 productions for LAMB's, and performed in over 100, including favorite roles in *A Midsummer Night's Dream*, *1776*, *Cyrano De Bergerac*, *The Boys Next Door*, and the one-man show *Damien*. He and his wife, director, actor, composer, Deborah Gilmour Smyth, make their home in Coronado.



Mike Buckley
Set Designer

Since 1984 Mike has designed over 200 productions at Lamb's in addition to many shows at such companies as San Diego Rep, The Laguna Playhouse and the Old Globe/USD MFA program.

Recent favorites include sets for *West Side Story* and *Les Misérables* here at Lamb's and set and lights for *In The Heights* at Southwestern College where he teaches technical theatre and design. Also a playwright, his romantic comedy *The Hit* had an extended run at Lamb's Coronado Theatre and then the Horton Grand Theatre and his set for *The Hit* earned Mike his fifth Patte Award. As an actor, Mike has appeared in many shows at Lamb's. Favorites include *The Nerd*, *The Hit*, *Joseph... Beau Jest*, *Johnny Pye and the Foolkiller*, *The Secret Garden*, *Boomers*

and *My Fair Lady*. He also appeared in *Crazy For You* at Moonlight. TV credits include *Wicked*, *Wicked Games* as well as several commercials. Mike also designs residential interiors through his business *Weekend Makeover*.



Nathan Peirson
Lighting Designer

a graduate of Biola University, Nate is Lamb's Director of Production. He has been with Lamb's since 1982 working as photographer, set construction, lighting designer and performer.



Jeanne Reith
Costume Designer

This year Jeanne celebrates her 25th year as a costume designer with Lamb's. She designed last year's production of *The Wonderful Wizard of Oz*, for which she was

awarded the Critics Circle, Craig Noel Award. Her work has achieved theater critics award for San Diego, Los Angeles, and Santa Barbara. Other productions awarded for costume design include her original designs for *A Servant Of Two Masters*, *The Light in the Piazza*, *Little Foxes*, *Joyful Noise*, *Metamorphosis*, and two dozen other productions. Besides her service and collaborative work at Lamb's, she currently teaches Fashion History at San Diego Mesa College.



Rachel Hengst
Props Designer

Rachel Hengst has worked with Lamb's since 2013. She made her professional theater debut in *MIXTAPE* as the Assistant Stage Manager and has learned so

much since then. Her Prop Design credits include Lamb's Player's productions of *The Nerd*, *The Miracle Worker*, *You Can't Take it With You*, *West Side Story*, and the latest incarnation of *MIXTAPE*. She thanks her family for their endless support and for God's guidance in her life.



Michael McKeon
Projection Designer

Michael is an avid Painter, Sculptor, Graphic Designer, Photographer, Videographer and "maker of things." In San Diego theaters, he's worked as a Scenic Designer/

Builder, Scenic Artist, Properties Designer, Multimedia/Video Designer and Technician and Stage Manager for numerous productions and special events. Some favorites: *Killer Joe* (SDTCC Craig Noel Award - Compass); *SideMan* (Diversionary); *Romeo and Juliet*, *Cinderella* (StageHouse); *A Midsummer Night's Dream* (Intrepid Theatre); For Lambs: *MIXTAPE*, *Trying* (SDTCC Nomination), *Joe vs. The Volcano* (SDTCC Nomination), *39 Steps*. Thanks to all! Check out his work at MichaelMcKeon.com



Ryan James Heath
Stage Manager

Ryan is excited to join the Lambs Players family with Dinner with Marlene. Recent credits include: *A Christmas Carol*, *Hay Fever*, *The Vortex*, *Dogfight*, *The Whale*, *Sons of the Prophet*, *The Motherf***er with the Hat*, *Maple and Vine* (Cygnet Theatre), *Alice Chan POP Tour*, *Kingdom City*, *Side Show* (La Jolla Playhouse), *Pericles*, *Reckless*, *Antigone* (Old Globe/USD MFA Acting), *Marry Me a Little*, *The Divine Sister*, *Birds of a Feather*, *The Pride* (Diversionary Theatre),

References to Salvador Dali Make Me Hot, *Freedom of Speech* (MOXIE), *Merry Wives of Windsor* (Livermore Shakespeare Festival), *I Hate Hamlet* (The Western Stage). Ryan has earned his Bachelor of Arts in Theatre from San Diego State University.

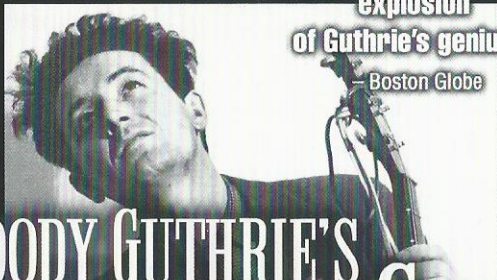


Actors' Equity Association (AEA), founded in 1913, represents more than 50,000 actors and stage managers in the United States. Equity seeks to advance, promote and foster the art of live theatre as an essential component of our society. Equity negotiates wages and working conditions, providing a wide range of benefits, including health and pension plans. AEA is a member of the AFL-CIO, and is affiliated with FIA, an international organization of performing arts unions. The Equity emblem is our mark of excellence. www.actorsequity.org

In Guest Residency at Horton Grand Theatre

INTREPID
theatre company
presents

"A dazzling, dizzying
explosion
of Guthrie's genius!"
- Boston Globe



WOODY GUTHRIE'S AMERICAN SONG

Bound for Glory, Nine Hundred Miles, This Land Is Your Land.

We all know them and we've sung them - songs about the open road, fighting for one's rights, and the beauty of nature. Now meet the man that brought them all to life. Pull up a chair and join with us in discovering and celebrating the great American who gave our country its voice.

MAY 13 - JUNE 19

WWW.LAMBSPLAYERS.ORG 619.437.6000