

San Diego Repertory Theatre

Sam Woodhouse, Artistic Director • Larry Alldredge, Managing Director

MY MAÑANA COMES

BY ELIZABETH IRWIN
DIRECTED BY DELICIA TURNER SONNENBERG
OCTOBER 1-25 • IN THE LYCEUM SPACE

COLLABORATORS

Scenic Designer Brian Redfern†
Costume Designer Anastasia Pautova
Lighting Designer Sherrice Mojani†
Sound Designer..... Kevin Anthenill†
Stage Manager..... Heather M. Brose*
Assistant Stage Manager James Ramirez
Assistant Director..... Zane Alcorn
Dramaturg Bernardo Mazón
Casting Director Jacole Kitchen

CAST

(In order of appearance)

Peter Edred Utomi
Jorge Jorge E. Rodriguez*
Whalid..... Spencer Smith*
Pepe Jose Martinez

UNDERSTUDIES:

John Delgado, Cortez L. Johnson, Omar Ruiz-Medellin

SETTING:

The play takes place over the course of a few weeks in a restaurant on 66th Street and Madison Ave in New York City on a particularly tony block.

My Mañana Comes is performed without an intermission.

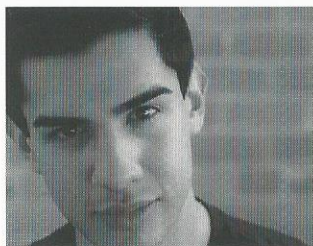
My Mañana Comes is presented by special arrangement with SAMUEL FRENCH, INC.



†Member of United Scenic Artists, Local USA-829 of the IATSE.

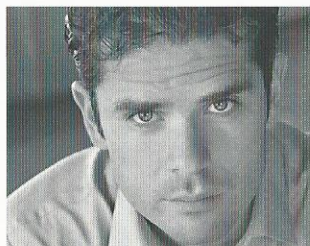
*Members of the Actors' Equity Association, the Union of Professional Actors and Stage Managers in the United States.

*The video or audio recording
of this production is
strictly prohibited.*



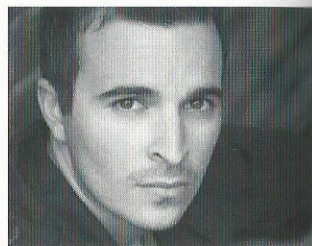
JOSE MARTINEZ
(PEPE)

Jose Martinez is ecstatic to make his San Diego REP debut! A recent graduate of Arizona State University with a BA in Theatre, he is thrilled to be able to come back home to perform. Favorite credits include *The Hour We Knew Nothing of Each Other* (Ensemble), *She Kills Monsters* (Orcus), *Nation* (Mau), *A Midsummer Night's Dream* (Lysander), and *Strange Bedfellows* (Vincent). Jose would like to thank his parents for their continuous love and support, and San Diego REP for this wonderful opportunity.



JORGE E. RODRIGUEZ
(JORGE)

Theatre - San Diego REP: *Oedipus El Rey*. La Jolla Playhouse: *Sideways*, *El Henry* (in Partnership with San Diego REP), *A Willow Grows Aslant*. Moxie: *A Discourse on the Wonders of the Invisible World*, *References to Salvador Dali Make Me Hot*. ion: *Reasons to be Pretty*, *Julia*. New Village Arts: *Much Ado About Nothing*. TV - *Terriers*. Numerous independent films. Studied 4 years with world renowned master teacher Larry Moss. Please visit Jorge's website for more information.
www.actorjorgerodriguez.com



SPENCER SMITH
(WHALID)

Spencer Smith has been performing professionally on the stage and screen since the age of 8 years old. Most recently Spencer completed the Broadway National Tour of *West Side Story* where he portrayed the principle role of Bernardo. San Diego Repertory Theater credits include *Oedipus El Rey*, *In The Heights* (nominated for 2014 Craig Noel award for Outstanding Featured Male Performance), *Zoot Suit* (2012 & 1997 revival). Spencer has accumulated a number of television and stage credits including: US Pro/AM Latin Dance Champion, United States Junior Swing Champion and United States Junior Latin Champion. Spencer earned his Bachelors of Fine Arts in Drama and Dance from the University of California Irvine.

According to the State Department, the imaginary "immigration line" is already composed of 4.4 million people.



EDRED UTOMI
(PETER)

Edred Utomi is overjoyed to be making his San Diego REP debut with such an incredible/truthful work of art. Edred is one of the two recipients of the San Diego REP's Carol Corolla Fellowship for Emerging Artists for Season 40. Recently seen in the title role of Moonlight's production of *Shrek the Musical*. Favorite Credits: *Joseph... Dreamcoat* (Lamb's Players Theatre), *Luce* (Old Globe), *Weatherman* (La Jolla Playhouse), Chief Stern in *The Big Test* (Legoland), Lysander in *A Midsummer Night's Dream: The Musical* (Intrepid), *Tartuffe* (USD MFA Production). He holds a BA in Theatre from the University of San Diego. Enormous thanks to San Diego REP, Delicia and cast/crew for this amazing opportunity. Love and thanks to Pops, Mama, Broham, Fabwan, SiSTAR, Momo, Connor and friends for all the support over the years. Infinite thanks and praise to God. And thank YOU audience member for supporting live theatre!



ELIZABETH IRWIN
(PLAYWRIGHT)

Elizabeth Irwin was born in Worcester, raised by Brooklyn and finished by el D.F. (aka Mexico City). She was a 2013-14 Playwrights Realm Writing Fellow and is a member of the Public Theater's 2015 Emerging Writer's Group. Her play *My Mañana Comes* received its off-Broadway debut in September 2014 at the Peter Jay Sharp Theater as Playwright Realm's Page One Production. She continues her work with Playwrights Realm as their 2014-15 Page One Resident Playwright. She was a member of the 2012-13 Soho Rep Writer/Director Lab. Elizabeth is a graduate of Amherst and Harvard and works in the New York City public schools. She is also a pretty great procrastinator.

Studies show that more than 50% of Americans eat out at least once a week, more than double what they did in the 1950s.

SPANISH ENGLISH

Ahorrar
To save

Burro
Donkey

Campesino
Peasant

Caro
Expensive

Chido
Cool

Enviar
To send

Ese
Dude

Fuga
Leak

Gordito
Fat boy

Gringa
American girl

Huelga
Strike

Listo
Ready

No hay nadie
There is nobody

Pachanga
Party

Suegra
Mother-in-law

MAKING AMERICA

America is a nation historically built on immigration, with approximately 41.3 million immigrants living in the United States in 2013. If you add all their U.S. born children, about 1/4 of our total population is either first or second generation.

COLLABORATOR PROFILES

DELICIA TURNER SONNENBERG (DIRECTOR)

Delicia Turner Sonnenberg is the founding Artistic Director of MOXIE Theatre, where she has directed many acclaimed productions. Other credits include: San Diego REP (*In the Wake, The Seafarer, The Good Body, Miss Witherspoon, Intimate Apparel*, and *Proof* with Sam Woodhouse), as well as plays for La Jolla Playhouse, Cygnet, Mo'olelo, New Village Arts, Diversionary, ion and Playwrights Project. Honors include: TCG's New Generations grant (SD Rep), SD Theatre Critics Circle awards, a Women's International Center Living Legacy award, Van Lier Directing Fellowships (Second Stage Theatre, NY) and the NY Drama League's Directors Program.

BRIAN REDFERN (SCENIC DESIGNER)

San Diego Rep: Debut. Elsewhere: more than 80 productions including designs for The Old Globe/USD MFA, Cygnet Theatre, Intrepid Shakespeare, ion Theatre Company, Mo'olelo Performing Arts, Moxie Theatre, New Village Arts, Playwrights Project, PLNU, SDSU, Summer Repertory Theatre, USD, Vantage Theatre and others. Brian is a member of United Scenic Artists local 829 and his work can be viewed at redfernscenticdesign.com

ANASTASIA PAUTOVA (COSTUME DESIGNER)

Anastasia has worked as a set and costume designer for more than 15 years in Russia and Western Europe. Now she is delighted working with San Diego REP Theatre. Anastasia is the very happy mom of 9 year old Nikolas. Her recent credits include: *Steal Heaven*, *In the time of the Butterflies*, *The Mountaintop*, *Midsummer Night's Dream*, *Macbeth*, *The Diary of Anne Frank*, *The House of Bernarda Alba*, *Princess Turandot*, *Cyrano de Bergerac*, *Three Sisters*, *The Government Inspector*. Education: MFA from St-Petersburg State Theatre Arts Academy.

SHERRICE MOJGANI (LIGHTING DESIGNER)

Recent designs include *Steal Heaven*, *HONKY*, *The Mountaintop*, *Clybourne Park* (San Diego REP). *Trouble in Mind*, *Jade Heart*, *Mud Blue Sky*, *Skinless*, *Freedom of Speech* (Moxie Theatre). *The Nutcracker*, *To Kill a Mockingbird* (New Village Arts). Sherrice holds a BA in Theater Arts from UC Santa Cruz and an MFA in Lighting Design from UC San Diego. sherrice.weebly.com

KEVIN ANTHENILL (SOUND DESIGNER)

Resident Sound Designer at The REP, previously designed *HONKY*, *Red*, *Zoot Suit*, with original music for *Detroit*, *Boom* and *In The Next Room*. Recent design and music credits include

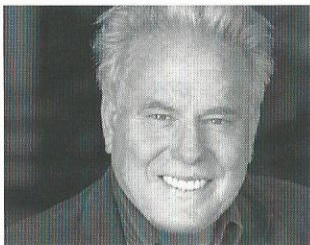
Globe For All: *All's Well That Ends Well*, Cygnet Theatre's *Shakespeare's R&J*, *The Importance of Being Earnest*, *Travesties* and *Maple and Vine*, USD/Old Globe's *Much Ado About Nothing*, *A Measure for Measure*, Diversionary Theatre's *Tru*, *Regrets Only*, *Bare*, *Thrill me*, *Sherantulas From Outer Space*. Moxie Theatre's *The Trestle at Pope Lick Creek*.

HEATHER M. BROSE (STAGE MANAGER)

PSM credits include: *In The Time of The Butterflies*, *In the Heights*, *The Mountaintop*, *Clybourne Park*, *The Exit Interview*, *Tortilla Curtain*, *Water & Power*, San Diego REP; *RESPECT*, Phil Roger Roy Productions; *PAGEANT*, *A Behanding in Spokane*, *Cabaret*, *It's a Wonderful Life*, *Private Lives*, Cygnet Theatre; *A Shayna Maidel*, North Coast Rep; *Upland*, CA / Lyceum Theatre; *Salome* and *The Father* directed by Estelle Parsons for The Actors Studio starring Al Pacino and Dianne Wiest; Stephen Sondheim's 70th Birthday Bash at the Hollywood Bowl.

BERNARDO MAZÓN (DRAMATURG)

Bernardo Mazón is in his final year at San Diego State University as a double-major in English with an emphasis in Drama, and Theatre with an emphasis in Performance. He is serving as the San Diego REP literary intern this season and is also an aspiring actor and director.



SAM WOODHOUSE
(CO-FOUNDER, ARTISTIC DIRECTOR)

Co-founded San Diego REP with D.W. Jacobs in 1976, and has since worked as a director, producer or actor on more than 260 productions. As an actor, he has performed on The REP stages in *The Seafarer*, in the title role of *King Lear*, *Proof*, *Hamlet*, and with the San Diego Symphony Orchestra in the title role of Stravinsky's *L'Histoire du Soldat*. His recent directorial work with The REP includes: *Violet*, *Oedipus El Rey*, *HONKY*, *El Henry* (with La Jolla Playhouse) *Detroit*, *Venus in Fur*, *In the Heights*, *Federal Jazz Project*, *Clybourne Park*, *The Who's TOMMY*, *In the Next Room or the vibrator play*, *Threepenny Opera* and *Water & Power*. In 2011 he directed *American Night: The Ballad of Juan José* for the Denver Center Theatre Company. In 2003, he was awarded the Patté Shiley Award for Lifetime Achievement by KPBS and the prestigious Alonzo Award by the Downtown San Diego Partnership. In 2006, he and Jacobs were honored with the Craig Noel Award by the San Diego Theatre Critics Circle for 30 years of artistic dedication to downtown and diversity.



TODD SALOVEY
(ASSOCIATE ARTISTIC DIRECTOR)

Todd Salovey is in his 25th REP season. He has partnered with Herbert Siguenza on *Steal Heaven*, *In the Time of the Butterflies* and *A Weekend with Pablo Picasso*, which has also played at the Alley Theatre in Houston, Denver Center Theatre, Los Angeles Theatre Center, Center Arts Rep. Mr. Salovey's many acclaimed REP shows include *A Hammer*, *A Bell and A Song to Sing* and *The Blessing of a Broken Heart* which he also wrote, *The Dybbuk*, *King Lear*, the world premiere of Yehuda Hyman's *The Mad Dancers*, *Hamlet* starring Jefferson Mays, *Uncle Vanya* and *Death of a Salesman* starring Michael Genovese, *Who's Afraid of Virginia Woolf?*, *The Imaginary Invalid* and *Three Hotels*. He is on the acting faculty at the University of California, San Diego. Mr. Salovey is the artistic director of the Lipinsky Family San Diego Jewish Arts Festival, which commissions new work exploring Jewish traditions in contemporary forms. He is married to Diane Boomer, and is the proud Dad of Leah and Aryeh.
tsalovey@ucsd.edu.



LARRY ALLDREDGE
(MANAGING DIRECTOR)

Former REP Board of Trustees member and theatre devotee Larry Alldredge joined The REP staff in January 2008 as managing director. Larry retired as vice president of technology at Qualcomm where he led a business and engineering team to develop satellite communication systems. He and his wife Dawn have traveled extensively while enjoying Larry's retirement. Now Larry is excited about having a "real job" again for a while. Larry's love of theatre began with Community Theatre of Terre Haute, Indiana, where he worked both on- and offstage.

DIRECTOR DELICIA TURNER SONNENBERG

worked with the REP for several years as an Artistic Associate. She is now Founding Artistic Director of the Moxie Theatre.



JOHN ANDERSON
(PRODUCTION MANAGER)

John Anderson is proud to be in his thirteenth season as production manager for San Diego REPertory Theatre. In the last decade John has also worked with other San Diego companies including Moxie, Diversionary, Ion, La Jolla Playhouse, Chronos, Teatro Mascara Magica, Vantage Theatre and others in a variety of capacities. Before coming to The REP John managed the productions for The California Shakespeare Theatre in Berkeley/Orinda. John studied Theatre at the University of Kansas. Since school John has worked as an actor, director, designer and collaborator with theaters in Chicago, Minneapolis, Norfolk, San Francisco, Dallas and San Diego. John spent five seasons as a core company member of the Minnesota Shakespeare Company and was the founding artistic director of Summer Shakes in Virginia Beach Virginia.

In 1912, the "Bread & Roses" strike became the first successful multi-ethnic strike.



JILL BISHOP
(DIRECTOR OF PHILANTHROPY)

Jill Bishop is a seasoned philanthropy professional and has spent the past 17 years working in non-profit organizations. She previously served as Director of Major Gifts for Arizona Theatre Company, and in professional development positions in public radio and domestic violence advocacy organizations in Ohio.

Prior to her nonprofit career, she spent over 20 years in media, marketing and communications. She earned a B.A. in Communications from Wright State University and a Masters in Public Administration from the University of Dayton. Her love of theatre and the performing arts was nurtured by growing up in a household where creativity, music and theatre were valued and encouraged. She is an avid hiker and outdoorsperson and enjoys travel, live music, yoga and being a curious soul. She is thrilled to be a member of The REP family.



MATTHEW GRABER
(DIRECTOR OF MARKETING AND COMMUNICATIONS)

Matt Graber is thrilled to be a part of The REP's 40th Season. Matt brings over 15 years of nonprofit marketing, management and leadership experience in the performing arts field. Some of the organizations Matt has worked with include South Coast Repertory, The Blank Theatre, Shawnee Summer Theatre, The Arden Theatre Company, Indiana Repertory Theatre, Cal Rep, and The Geffen Playhouse. Matt most recently served as Director of Marketing and Communications at Arizona Theatre Company, and has since founded a successful arts marketing and management firm SuperYou Solutions. He possesses an MBA/MFA in Theatre Management for California State University, Long Beach. Matt lives with his fiancé, and partner in all things, Jodie Weisenberg with their cat - Giggles.

"The owners of this country know the truth. It's called the American Dream, because you have to be asleep to believe it." - George Carlin