

THE WELK THEATRE
PRESENTS

Winter Wonderettes

Created by Roger Bean

DIRECTED &
CHOREOGRAPHED BY **BETS MALONE**

PRODUCED BY **JOSHUA CARR**

MUSIC DIRECTOR **JUSTIN GRAY** LIGHTING DESIGN **JENNIFER EDWARDS** SOUND DESIGN **PATRICK HOYNY**
COSTUME COORDINATOR **CARLOTTA MALONE** PROPERTIES BY **BEVERLY GEORGE** SET DESIGN AND BUILD BY **DOUG DAVIS**
COSTUMES PROVIDED BY **STEELE SPRING STAGE RIGHTS**

WINTER WONDERETTES

WRITTEN & CREATED BY **ROGER BEAN**

VOCAL ARRANGEMENTS BY **ROGER BEAN & BRIAN BAKER**

MUSICAL ARRANGEMENTS BY **BRIAN BAKER**

WINTER WONDERETTES PREMIERED AT MILWAUKEE REPERTORY THEATER
JOSEPH HANREDDY, ARTISTIC DIRECTOR AND TIMOTHY J. SHELBS, MANAGING DIRECTOR

WINTER WONDERETTES IS PRESENTED THROUGH SPECIAL ARRANGEMENT WITH
STEELE SPRING STAGE RIGHTS.
FOR LICENSING INFORMATION, VISIT WWW.STAGERIGHTS.COM.

Welk
RESORTS
SAN DIEGO

1.888.802.SHOW
BOX.OFFICE@WELKRESORTS.COM • WELKRESORTS.COM

welk
theatre
sandiego

Production Staff

Producer/Theatre Manager Joshua Carr
Assistant Theatre Manager Jennifer Edwards
Director/Choreographer Bets Malone
Original Direction and Choreography Roger Bean and John Vaughan
Musical Director Justin Gray
Lighting Design Jennifer Edwards
Sound Design Patrick Hoyny
Costume Coordinator Carlotta Malone
Costumes Provided by Steele Spring Stage Rights
Properties by Beverly George
Set Design/Builder Doug Davis
Technical Director Doug Davis
Sound Engineer Ryan Hoyny
Crew Crystal Burden

Musicians

Piano Justin Gray
Drums/Percussion Mike Masessa
Sax Matthew Best
Guitar Vince Cooper

Administrative

Resort General Manager Sean Coogan
Theatre Producer / Manager Joshua Carr
Assistant Theatre Manager Jennifer Edwards
Box Office Staff Lisa Norman-Henderson, Edgar Leon,
Javier Alcantar, Dane Rozakas
House Manager Bill Reese
Group Sales Janice Humble, Lisa Norman-Henderson

Winter Wonderlies Music

Music Clearance by Rubicon II Music Clearance, Burbank, CA.
All Songs Used By Permission. All Rights Reserved.

- A Marshmallow World** by Peter DeRose and Carl Sigman. Used by permission of Shapiro, Bernstein & Co., Inc.
- All Those Christmas Clichés** by Lynn Ahrens and Stephen Flaherty. © 1993 MB Music Corp. (ASCAP), Pen and Perseverance (ASCAP) & Hillsdale Music Inc. (ASCAP). All rights on behalf of Pen and Perseverance & Hillsdale Music Inc. administered by WB Music Corp. (ASCAP)
- Chipmunk Cheer** by Roger Bean. © SSP Publishing.
- Christmas Will Be Just Another Lonely Day** by Lee Jackson and Patti Seymour. Used courtesy of Ahab Music Company, Inc. (BMI)
- ¿Dónde Está Santa Claus?** by Alvin Greiner, Rod Gordon Parker and George Scheck, Ragtime Music Co.
- It's Christmas Time All Over The World** by Hugh Martin. TRO-© 1965 (Renewed) Cromwell Music, Inc., New York, NY
- Jingle Bell Rock** by Joe Beal and Jim Boothe. © 1957 (Renewed) Chappell & Co., Inc. (ASCAP)
- Jingle Bells** by J. Pierpont. Arrangement © 2003 SSP Publishing
- Little Saint Nick** by Mike E. Love, Brian Douglas Wilson. © All rights owned or administered by Irving Music, Inc. (BMI)
- The Man With The Bag** by Dudley Brooks, Harold Stanley & Irving Taylor. Used by permission of Morley Music Co.
- Mele Kalikimaka** by R. Alex Anderson. All rights owned and administered by Lovely Hula Hands Music LLC (c/o Lichelle Music Co.) (ASCAP)
- Mister Santa** by F. D. Ballard. Used by permission of Edwin H. Morris & Company, a division of MPL Communications, Inc.
- O Tannenbaum** German Traditional. Arrangement © 2003 SSP Publishing
- Ring Those Christmas Bells** by Marve Fisher and Gus Levene. © Music Sales Corporation (ASCAP)
- Rockin' Around The Christmas Tree** by Johnny Marks. © 1958 (Renewed 1986) Used courtesy of St. Nicholas Music (ASCAP)
- Run, Rudolph, Run** by Johnny Marks and Marvin Brodie. Used courtesy of St. Nicholas Music (ASCAP)
- Santa Baby** by Joan Javits, Philip Springer and Tony Springer. Used courtesy of Tamir Music (ASCAP)
- Santa Claus Is Comin' To Town** by J. Fred Coots and Haven Gillespie. © 1934 (Renewed) EMI Miller Music and Haven Gillespie Music c/o Larry Spier Music Publishing (ASCAP)
- Sleigh Ride** by Leroy Anderson and Mitchell Parish. Used by permission of EMI Mills Music, Inc. (ASCAP)
- Snowfall** by Claude Thornhill and Ruth Thornhill. © 1941 (Renewed) Chappell & Co. (ASCAP)
- Suzy Snowflake** by Roy C. Bennett and Sid Tepper. © 1951 (Renewed) Chappell & Co., Inc. (ASCAP)
- This Christmas (Hang All The Mistletoe)** by Donny Hathaway and Nadine McKinnor. Used courtesy of BMG Songs, Inc. and Crystal Raisin Music (ASCAP). All rights in the U.S. on behalf of Kuumba Music Publishing (ASCAP) administered by BMG Songs, Inc. (ASCAP)
- (We Wanna See) Santa Do The Mambo** by Fred Smith and Horace Webb. Used through the courtesy of Regent Music Corp. (BMI)
- What Are You Doing New Year's Eve?** by Frank Loesser. Used by permission of Frank Music Corp.
- Winter Wonderland** by Bernard Felix and Dick Smith. © 1934 (Renewed) WB Music Corp. (ASCAP)

Part

SARAH ERRINGTON.....MISSY MILLER

RAE K. HENDERSEN.....BETTY JEAN REYNOLDS

KRISTEN LAMOUREUX.....CINDY LOU HUFFINGTON

NOELLE MARION.....SUZY SIMPSON



Suzy



Betty Jean



Cindy Lou



Suzy

Cast List
IN ALPHABETICAL ORDER



SARAH ERRINGTON

MISSY MILLER

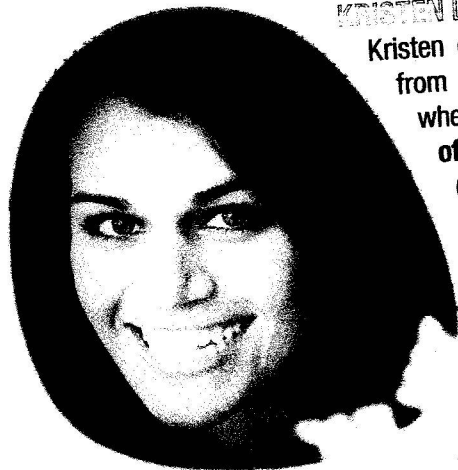
Sarah Errington is thrilled to be back at the Welk Resorts Theatre after appearing in **Chicago**, **South Pacific** and **A-5678**. San Diego credits: **Dames at Sea** (Ruby) and **Spelling Bee** (Logainne) at North Coast Rep, **Nunsense** (Amnesia) and **Little Women** (Beth) at Moonlight, **SUDS** (Cindy) and **Into the Woods** (Cinderella) at New Village Arts, **Tarrytown** and **Marry Me a Little** at Diversionary. Sarah is the resident choreographer and performer at Legoland California Resort. Many thanks to Bets for this 'wonderful' opportunity and to Ray, Justin, and Jen. And always, love to Rae.



WALKER HENDERSON

BETTY JEAN REYNOLDS

Welk Resorts Theatre debut. Previous San Diego credits include **Suds** (Marge) at NVA, **Bare** (Claire) and a reading of **Stop Kiss** (Callie) at Diversionary, **Swingtime Canteen** (Jo) and **Nunsense** (Sister Robert Ann) at Moonlight, **Pajama Game** (Gladys) at Starlight, **Frida Libre & Recipe for Disaster** with La Jolla Playhouse. Rae is thrilled to be sharing the stage again with her lovely wife, Sarah. Thanks to Bets and Josh for this fantastic opportunity.



KRISTEN LAMOUREUX CINDY LOU HUFFINGTON

Kristen comes to Welk Resorts Theatre straight from a wonderful season at Tuacahn in Utah, where she appeared in **Joseph...**, **The Wizard of Oz** (Dorothy U/S) and **The Little Mermaid** (Allana). She was last seen by San Diego audiences in **The World Goes Round** with Moonlight Stage productions, having previously been seen at Moonlight in **Hairspray** (Penny Pingleton), **Crazy for You**, and **Young Frankenstein**. Favorite regional credits include Maggie in **A Chorus Line** (Musical Theatre West, 3D Theatricals), Kate Murphey in **Titanic** (Musical Theatre Guild), and Daisy Gamble in **On a Clear Day...** (MTW's Reiner Reading Series). Love and thanks to dearest Bets and to her family for the never-ending support. Merry Christmas!



NOELLE MARION SUZY SIMPSON

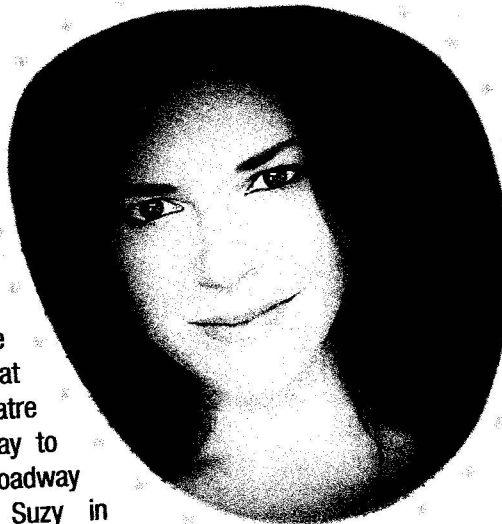
Noelle is proud to make her Welk Resorts Theatre debut with such a wonderful show! Regional favorites include: Kim MacAfee in **Bye Bye Birdie** (Cabrillo Music Theatre), Inga in **Young Frankenstein** (Moonlight), Patsy West in **Girl Crazy** (Musical Theatre Guild), Penny Pingleton in **Hairspray** (Tuacahn), Lady Larken in **Once Upon a Mattress** (Cabrillo Music Theatre), Lily St. Regis in **Annie** w/Sally Struthers (Cabrillo Music Theatre), Kitty in **The Drowsy Chaperone** (The Norris), and Niki Harris in **Curtains** (Performance Riverside). Thank you to Bets and Joshua for this opportunity, to everyone at ATB for their continued trust, to my family for their eternal love, and to you for supporting the arts. www.NoelleMarion.com

BETS MALONE

DIRECTOR/CHOREOGRAPHER

Bets has over a 15-year history with **The Marvelous Wonderettes** and even longer history with the creator of the franchise, Roger Bean. She originated the role of Suzy in the original workshop production at The Milwaukee Repertory Theatre and journeyed with it all the way to originate the role in the hit Off-Broadway production. Bets also played Suzy in **Winter Wonderettes** and **The Marvelous Wonderettes-Caps and Gowns**. She can be heard on

all three cast recordings. She now enjoys sharing the Wonder world with new girls and new theaters. Her choreography can be seen all across the country. Thanks to Josh for the joy of sharing it with the Welk audiences. Be marvelous!



ROGER BEAN

PLAYWRIGHT

Roger Bean is the creator of the long-running off-Broadway smash hit **The Marvelous Wonderettes**, which has played in hundreds of theaters around the world. Mr. Bean also created two popular sequels for these four delightful song leaders from Springfield High: **The Marvelous Wonderettes: Caps and Gowns** and the holiday celebration **Winter Wonderettes**. Original cast albums

for all three Wonderettes shows are available online at Amazon and iTunes. Additional audience-pleasing jukebox hits from Mr. Bean include **Summer of Love**, **The Andrews Brothers**, **Why Do Fools Fall In Love?**, **Route 66** (over 100 productions throughout the country), and the long-running Los Angeles hit **Life Could Be A Dream**, the '60s doo-wop musical that received the LA Drama Critics Circle Award, the LA Weekly Theatre Award and the Backstage Garland Award for Outstanding Musical of 2010. www.rogerbean.com

