

San Diego Repertory Theatre

Sam Woodhouse
Artistic Director

Larry Alldredge
Managing Director

VENUS IN FUR

By DAVID IVES

Directed by KIM RUBINSTEIN and SAM WOODHOUSE

NOVEMBER 9 - DECEMBER 8, 2013
IN THE LYCEUM SPACE

Scenic Designer	Robin Sanford Roberts [†]
Costume Designer	Jennifer Brawn Gittings
Lighting Designer	Lonnie Rafael Alcaraz [†]
Sound Designer	George Yé
Dramaturge	Dawn Moore
Stage Manager	Heather M. Brose*
Assistant Stage Manager	Jessica Isaac
Assistant Director	Annalice Heinz
Assistant Lighting Designer	Karyn Lawrence
Casting Director	Jacole Kitchen

CAST

(in order of appearance)

Thomas	Jeffrey Meek*
Vanda	Caroline Kinsolving*

UNDERSTUDIES

G. Bartell, Annalice Heinz

TIME AND PLACE

An audition room. 2013

This production is performed without an intermission.

Venus in Fur is presented by special arrangement with Dramatists Play Service, Inc., New York. Originally produced by Classic Stage Company, (Brian Kulick, Artistic Director; Jessica R. Jenen, Executive Director). Originally produced on Broadway by the Manhattan Theatre Club (Lynne Meadow, Artistic Director; Barry Grove, Executive Producer) by special arrangement with Jon B. Platt, Scott Landis and Classic Stage Company, at the Samuel J. Friedman Theatre on October 13, 2011.



*Members of the Actors' Equity Association, the Union of Professional Actors and Stage Managers in the United States.



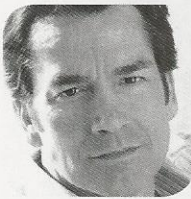
*Member of United Scenic Artists, Local USA-829 of the IATSE.

The videotaping or other audio recording of this production is strictly prohibited.



KIM RUBINSTEIN
(Co-Director)
UCSD Professor and theatre director, Kim Rubinstein was formerly Long Wharf Theatre's Associate Artistic Director

where she directed *Guys and Dolls*, *A Midsummer Night's Dream*, *Private Lives*, *Santaland Diaries* and *The Cocktail Hour*. Other recent directing credits include *Savannah Disputation* and *The American Plan* (Old Globe); *Seeing Red: Waiting for Lefty* (California Repertory), *The Intelligent Design of Jenny Chow* (Portland Center Stage and San Jose Repertory Theatre), and *Much Ado About Nothing* and *Romeo and Juliet* (Shakespeare Santa Cruz), and was the Associate/Tour Director of the national tour of *Angels in America*.



JEFFREY MEEK
(Thomas)
Theatre: *Threepenny Opera*, *Celebration of the Lizard*, *Dracul*, *Burn This* (San Diego Repertory), *A Streetcar Named*

Desire (South Coast Repertory), *Tabletop* (Laguna Playhouse), *Coriolanus* (Claire Trevor Theatre) *Cuba and his Teddy Bear* (Callboard Theatre), *LuAnn Hampton** (Zephyr Theatre), *God's Favorite* (Performance Riverside), *Death of a Salesman* (Saddleback), *Haven't We Met?* (NYTW). Jeff Meek has won two Dramalogue Awards for Best Actor. Film: *Heart Condition*, *Johnny Handsome*, *Winter People*, *Breaking the Surface*. TV Series Lead: "Raven," "The Exile," "Mortal Kombat Conquest," "As The World Turns," "Search for Tomorrow." Gueststar: "Criminal Minds," "Castle," "The Glades," "Miami Vice," "Profiler." www.JeffreyMeek.net



CAROLINE KINSOLVING
(Vanda) For credits, bio, and totally uncandid photographs, please visit www.CarolineKinsolving.com. Great gobs of

gratitude to the fateful God(parent)s: the Buxtons of Bainbridge, the McEvoy's of San Francisco, and, of course, Aphrodite of Olympus. And thank you very, very, very, very, very, very, very, very,

very, very, very, very, very, very, very, very, very, very, very, very, very, very, very, very, very, very, very, very, very, very (I could go on, but there is a word-count limit) much for supporting the theatre.

ROBIN SANFORD ROBERTS (Scenic Designer) **BROADWAY:** *It Ain't Nothin' But the Blues*. San Diego REP: *Federal Jazz Project*, *Clybourne Park*, *Superior Donuts*, *The Seafarer*, *Ain't Misbehavin'*, *Restless Spirits*, *Fire on the Mountain*, *Working*, *The Merchant of Venice*, *Shylock*, *The Beauty Queen of Leenane*, *Avenue X*, *It Ain't Nothin' But the Blues*. Old Globe Theatre: over 25 productions including: *Alive and Well*, *The Price*. *Fiction*, *Bus Stop* (Critics Circle award), **REGIONAL:** She has also designed for: Denver Center Theatre Company, Portland Center Stage, San Jose Repertory Theatre, Arizona Theatre Company, Sacramento Theatre Company and Swine Palace Productions. She teaches in the Department of Theatre and Performance Studies at USD. www.robinsanfordroberts.com

JENNIFER BRAWN GITTINGS (Costume Designer) San Diego REP: *Clybourne Park*, *TOMMY*, *In The Next Room, or the vibrator play, boom!*, *The Seafarer*, *Three-penny Opera*, *The Princess and the Black-eyed Pea*, *The Good Body*, *The Clean House*, *Don Quixote*, *Miss Witherspoon*, *Intimate Apparel*, *The Goat*, *Crowns*. She has designed costumes for over 100 productions regionally. Local credits include: La Jolla Playhouse, The Old Globe, MOXIE Theatre (Design Ambassador), Diversionary Theatre (Associate Artist). Ms. Gittings is half of the design team of LEO DUO Costumes & Couture, and has been honored with a Pâté Award, NAACP Theatre Award, Stage Scene LA Award, and three Craig Noel Awards. www.icostumedesign.com, www.leoduo.com

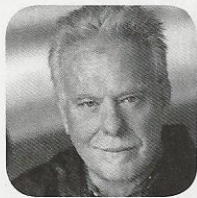
LONNIE RAFAEL ALCARAZ (Lighting Designer) Lonnie is a Professor and the head of the graduate lighting program at UC Irvine. He is also a professional lighting designer. He most recently designed *White Christmas* at Syracuse Stage, *Absurd Person Singular* at South Coast Repertory and *SEED: A Weird Act of Faith* for Cornerstone Theater Company where he is an associate artist. He has designed *Culture Clash in AmeriCCa*, *Water and Power* and *The*

Great American Trailer Park Musical at San Diego REPertory Theatre. He is a member of the United Scenic Artist / IATSE – Local 829. www.lradesigns.com

GEORGE YÉ (Sound Director)
George is an associate artistic director at Cygnet Theatre, resident artist at Diversionary Theatre and has numerous directing, sound design, and fight director credits in San Diego and across the country in Film, and Theatre. Recent fight director credits include: La Jolla Playhouse, *Peter and the Starcatchers*, *Tobacco Road*; The Old Globe Theatre, *Dancing in the Dark*, *The American Dream*, & *Kingdom*, Old Globe MFA, *An Absolute Turkey*, *Richard III*, *Marat Sade*. He is the recipient of the Pâté Award for Theatre Excellence, The San Diego Critics Circle Award for sound design, is a member of Actor's Equity Association, and the American Society of Fight Directors.

DAWN MOORE (Dramaturge) Dawn loves that being a dramaturge offers the chance to learn about new and sometime unexpected things – but after the research for this play Dawn is hoping no one is looking through her internet surfing history! Previously at The REP: *The Mountaintop*; *Clybourne Park*; *The Exit Interview*; *Tortilla Curtain*; *In the Wake*; *In the Next Room, or the vibrator play*; *boom!*; *The Three Penny Opera*. Other: *Eurydice* (Moxie), *La Gaviota* (Ion). Dawn is also the President of The REP's Board of Trustees (so please give generously!) and in her former life, she was a Vice President of Engineering at Qualcomm.

HEATHER M. BROSE (Stage Manager)
Recent PSM credits include: *In the Heights*, *The Mountaintop*, *Clybourne Park*, *The Exit Interview*, *Tortilla Curtain*, *The Road to Mecca*, *Doubt*, *Water and Power*, *The Blessing of a Broken Heart*, San Diego REP; *Mixtape*, *Lambs*; *RESPECT*, *Phil Roger Roy Productions*; *Little Shop of Horrors*, *Cabaret*, *It's a Wonderful Life*, *Private Lives*, *The Piano Lesson*, *Man From Nebraska*, Cygnet Theatre; *A Shayna Maidel*, North Coast Rep; *Menopause The Musical*; TOC Productions *Salome and The Father* directed by Estelle Parsons for The Actors Studio starring Al Pacino and Dianne Wiest; and *Sondheim's 70th Birthday Bash* at the Hollywood Bowl. Proud member of AEA.



SAM WOODHOUSE
(Co-Founder,
Artistic Director)

Mr. Woodhouse co-founded San Diego REPeritory Theatre with D.W. Jacobs in 1976, and has since served as its Producing and Artistic Director. He has worked as a director, producer or actor on more than 250 REP productions. Mr. Woodhouse has performed as an actor on The REP stages in *The Seafarer*, in the title role of *King Lear*, *Proof*, *Hamlet*, and with the San Diego Symphony Orchestra in the title role of *Stravinsky's L'Histoire du Soldat*. For The REP's 38th Season he will direct the upcoming productions of *Venus in Fur* and *Detroit*. His most recent directorial work with The REP includes: *In the Heights*, *Federal Jazz Project*, *Clybourne Park*, *The Who's TOMMY*, *In the Next Room or the vibrator play*, *Superior Donuts*, *Hairspray*, *boom*, *The Threepenny Opera* and *Water & Power*. In 2011 he directed *American Night: The Ballad of Juan José* for the Denver Center Theatre Company. In 2003, he was awarded the Patté Shiley Award for Lifetime Achievement by KPBS and the prestigious Alonzo Award by the Downtown San Diego Partnership. Mr. Woodhouse is the founder of The REP's Calafia Initiative, a multi-disciplinary artistic initiative that brings together unlikely partners to create new works that speak to the future of our bi-national region. In 2006, he and Jacobs were honored with the Craig Noel Award by the San Diego Theatre Critics Circle for 30 years of artistic dedication to downtown and diversity.



TODD SALOVEY
(Associate Artistic Director) is in his 23rd season as The REP's Associate Artistic Director. Mr. Salovey directed the original workshop production

of *A Weekend with Pablo Picasso* at The REP and its world premiere at the Alley Theatre in Houston. He also directed subsequent productions at Los Angeles Theatre Center, Center Arts Rep, and at Denver Center Theatre Company. Mr. Salovey has directed many acclaimed REP shows including *A Hammer*, *A Bell and A Song to Sing*, *The Road to Mecca*, *A Weekend with Pablo Picasso*,

Doubt, and *The Blessing of a Broken Heart*, which he also adapted, *Brooklyn Boy*, the world premiere of Yehuda Hyman's *The Mad Dancers*, *Hamlet* starring Jefferson Mays, *Uncle Vanya* and *Death of a Salesman* starring Michael Genovese, Edward Albee's *Who's Afraid of Virginia Woolf?*, *King Lear*, *The Illusion*, *The Dybbuk*, *The Imaginary Invalid*, *Three Hotels*, and *A Christmas Carol*. He is on the acting faculty at the University of California, San Diego, where he has directed "Six Characters in Search of an Author and Stage Door." Mr. Salovey is the artistic director of the Lipinsky Family San Diego Jewish Arts Festival, which commissions new work exploring Jewish traditions in contemporary artistic forms. He produces many REP Surround Events, including Talkin' Theatre with Todd. Todd is married to Diane Boomer and is the very proud dad of Leah and Aryeh. tsalovey@ucsd.edu.



LARRY ALLDREDGE
(Managing Director) Former REP Board of Trustees member and theatre devotee Larry Alldredge joined The REP staff in January

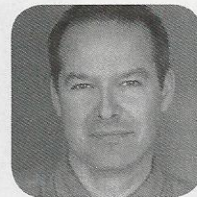
2008 as managing director. Larry retired as vice president of technology at Qualcomm where he led a business and engineering team to develop satellite communication systems. He and his wife Dawn have traveled extensively while enjoying Larry's retirement. Now Larry is excited about having a "real job" again for a while. Larry's love of theatre began with Community Theatre of Terre Haute, Indiana, where he worked both on- and offstage.



JOHN ANDERSON
(Production Manager) joined The REP as production manager in 2003. Before coming to The REP, John managed productions for

The California Shakespeare Theatre in Berkeley/Orinda. John studied Theatre at the University of Kansas. Since school, John has worked as an actor, director, designer and collaborator with theatres in Chicago, Minneapolis, Norfolk, San Francisco, Dallas and San Diego. John spent five seasons as a core company

member of the Minnesota Shakespeare Company and was the founding artistic director of Summer Shakes in Virginia Beach, Virginia.



JOHN OLCHAK
(Marketing Manager) With a background in film studio marketing, partnership, and theatrical publicity he leads a talented, dedicated marketing

team here at The REP. A graduate of the University of North Carolina, Charlotte with degrees in Political Science and Theater. His first job in the theater was at the Charlotte Shakespeare Company LORT (R.I.P.) playing the role of Balthasar in *Romeo and Juliet* where he uttered the immortal lines: "No, my good lord."



HERBERT SIGUENZA
(Artist-in-Resident) is a recent recipient of a TCG New Generations Grant and will be an Artist-in-Residence and mentee at the REP

through 2013. He is an actor, playwright, visual artist, and a founding member of the nationally recognized performance group, Culture Clash. Since 1984, Culture Clash has been creating works for America's major regional theatres. Herbert was last seen at SD REP in *The Exit Interview*. Other REP performances include *Zoot Suit* and his own *A Weekend with Pablo Picasso*, *Culture Clash in AmeriCCa* and Richard Montoya's *Water and Power*. His recent film credits include "Ben Ten: Alien Swarm" for the Cartoon Network and "Larry Crowne" directed by Tom Hanks.